

Histone H2A.XS139ph (phospho Ser139) antibody

Cat. No. GTX127340

| | |
|---------------------|-----------------------------------|
| Host | Rabbit |
| Clonality | Polyclonal |
| Isotype | IgG |
| Applications | WB, ICC/IF, IHC-P, IHC-Fr, IHC-Wm |
| Reactivity | Human, Mouse, Rat, Zebrafish |

References (48)

★★★★★ Review (2)

Package

100 µl, 25 µl

Applications

Application Note

*Optimal dilutions/concentrations should be determined by the researcher.

| Suggested dilution | Recommended dilution |
|--------------------|----------------------|
| WB | 1:500-1:3000 |
| ICC/IF | 1:100-1:1000 |
| IHC-P | 1:100-1:1000 |
| IHC-Fr | Assay dependent |
| IHC-Wm | Assay dependent |

Not tested in other applications.

Calculated MW 15 kDa. ([Note](#))

Properties

| | |
|----------------------|--|
| Form | Liquid |
| Buffer | PBS, 1% BSA, 20% Glycerol |
| Preservative | 0.025% ProClin 300 |
| Storage | Store as concentrated solution. Centrifuge briefly prior to opening vial. For short-term storage (1-2 weeks), store at 4°C. For long-term storage, aliquot and store at -20°C or below. Avoid multiple freeze-thaw cycles. |
| Concentration | 0.25 mg/ml (Please refer to the vial label for the specific concentration.) |
| Immunogen | Carrier-protein conjugated synthetic peptide surrounding phospho Ser139 of human Histone H2A.X. The exact sequence is proprietary. |
| Purification | Purified by antigen-affinity chromatography. |
| Conjugation | Unconjugated |



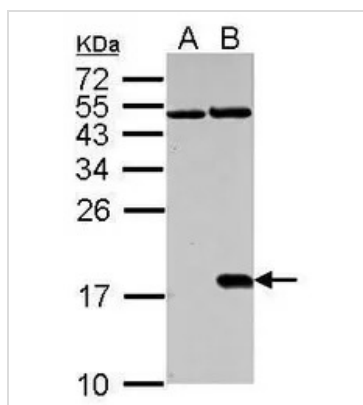
For full product information, images and publications, please visit our [website](#).

For laboratory research use only. Not for any clinical, therapeutic, or diagnostic use in humans or animals. Not for animal or human consumption.

Note

Purchasers shall not, and agree not to enable third parties to, analyze, copy, reverse engineer or otherwise attempt to determine the structure or sequence of the product.

DATA IMAGES



GTX127340 WB Image

Histone H2A.X (phospho Ser139) antibody detects H2AFX protein in cisplatin-treated samples by western blot analysis.

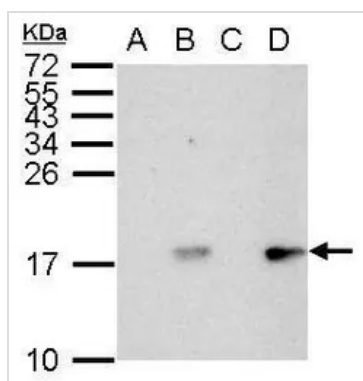
A. 30 μg NIH-3T3 whole cell lysate/extract (untreated)

B. 30 μg NIH-3T3 whole cell lysate/extract (30 μM cisplatin treatment for 24hr)

15% SDS-PAGE

Histone H2A.X (phospho Ser139) antibody (GTX127340) dilution: 1:1000

The HRP-conjugated anti-rabbit IgG antibody (GTX213110-01) was used to detect the primary antibody.



GTX127340 WB Image

Histone H2A.X (phospho Ser139) antibody detects H2AFX protein by western blot analysis.

A. 30 μg HCT116 whole cell lysate/extract (untreated for 2hr)

B. 30 μg HCT116 whole cell lysate/extract (UVB treatment 50mJ for 2hr)

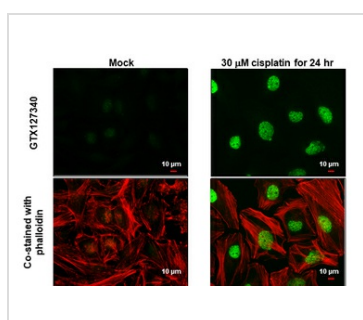
C. 30 μg HCT116 whole cell lysate/extract (untreated for 6hr)

D. 30 μg HCT116 whole cell lysate/extract (UVB treatment 50mJ for 6hr)

15% SDS-PAGE

Histone H2A.X (phospho Ser139) antibody (GTX127340) dilution: 1:1000

The HRP-conjugated anti-rabbit IgG antibody (GTX213110-01) was used to detect the primary antibody.



GTX127340 ICC/IF Image

Histone H2A.XS139ph (phospho Ser139) antibody detects Histone H2A.XS139ph (phospho Ser139) protein at nucleus by immunofluorescent analysis.

Sample: HeLa cells were fixed in 4% paraformaldehyde at RT for 15 min.

Green: Histone H2A.XS139ph (phospho Ser139) stained by Histone H2A.XS139ph (phospho Ser139) antibody (GTX127340) diluted at 1:1000.

Red: phalloidin, a cytoskeleton marker, diluted at 1:100.

Scale bar= 10 μm.



For full product information, images and publications, please visit our [website](https://www.genetex.com).