

Histone H2A.X antibody

Cat. No. GTX127343

Host	Rabbit
Clonality	Polyclonal
Isotype	IgG
Applications	WB, IHC-Wm
Reactivity	Zebrafish, Nothobranchius furzeri

References (1)

Package

100 µl, 25 µl

Applications

Application Note

*Optimal dilutions/concentrations should be determined by the researcher.

Suggested dilution	Recommended dilution
WB	1:500-1:3000
IHC-Wm	1:100-1:500

Not tested in other applications.

Calculated MW 15 kDa. ([Note](#))

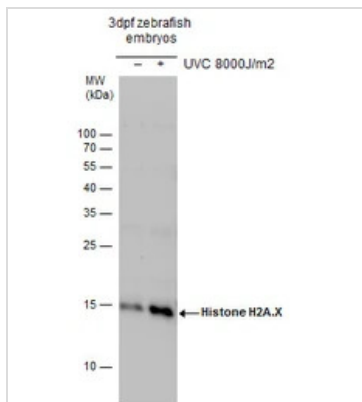
Properties

Form	Liquid
Buffer	PBS, 1% BSA, 20% Glycerol
Preservative	0.025% ProClin 300
Storage	Store as concentrated solution. Centrifuge briefly prior to opening vial. For short-term storage (1-2 weeks), store at 4°C. For long-term storage, aliquot and store at -20°C or below. Avoid multiple freeze-thaw cycles.
Concentration	1 mg/ml (Please refer to the vial label for the specific concentration.)
Immunogen	Carrier-protein conjugated synthetic peptide encompassing a sequence within the C-terminus region of zebrafish Histone H2A.X. The exact sequence is proprietary.
Purification	Purified by antigen-affinity chromatography.
Conjugation	Unconjugated
Note	For laboratory research use only. Not for any clinical, therapeutic, or diagnostic use in humans or animals. Not for animal or human consumption. Purchasers shall not, and agree not to enable third parties to, analyze, copy, reverse engineer or otherwise attempt to determine the structure or sequence of the product.

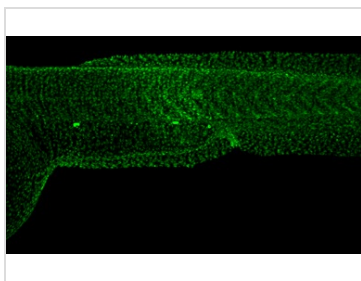


For full product information, images and publications, please visit our [website](#).

DATA IMAGES

**GTx127343 WB Image**

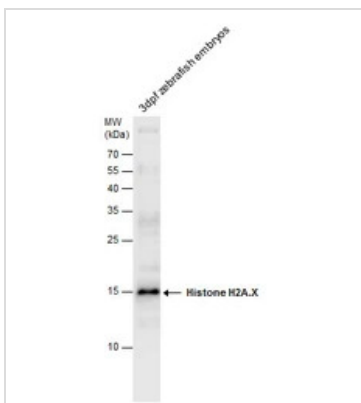
Histone H2A.X antibody detects Histone H2A.X protein by Western blot analysis. Un-treated (-) and treated (+, 8000J/m² UVC treatment) 3dpf zebrafish embryos whole cell extracts (30 µg) were separated by 15% SDS-PAGE, and the membrane was blotted with Histone H2A.X antibody (GTx127343) at a dilution of 1:1000.

**GTx127343 IHC-Wm Image**

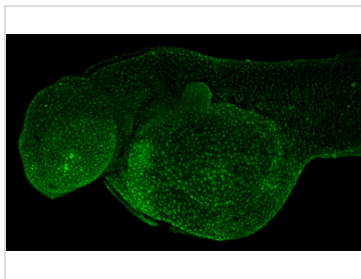
Histone H2A.X antibody detects Histone H2A.X protein on whole mount zebrafish by immunohistochemical analysis.

Sample: 2 day-post-fertilization zebrafish embryo.

Histone H2A.X antibody (GTx127343) dilution: 1:100.

**GTx127343 WB Image**

Zebrafish embryos extract (50 µg) was separated by 15% SDS-PAGE, and the membrane was blotted with Histone H2A.X antibody (GTx127343) diluted at 1:1000. The HRP-conjugated anti-rabbit IgG antibody (GTx213110-01) was used to detect the primary antibody.

**GTx127343 IHC-Wm Image**

Histone H2A.X antibody detects Histone H2A.X protein on whole mount zebrafish by immunohistochemical analysis.

Sample: 2 day-post-fertilization zebrafish embryo.

Histone H2A.X antibody (GTx127343) dilution: 1:100.



For full product information, images and publications, please visit our [website](#).