

## N-Cadherin antibody

Cat. No. GTX127345

<b>Host</b>	Rabbit
<b>Clonality</b>	Polyclonal
<b>Isotype</b>	IgG
<b>Applications</b>	WB, ICC/IF, IHC-P, IHC-Fr
<b>Reactivity</b>	Human, Mouse, Rat, Monkey

References ( 87 )

★★★★☆ Review ( 3 )

Package

100 µl, 25 µl

## PRODUCT

## Summary

N-Cadherin antibody recognizes N-cadherin protein, a calcium-dependent cell adhesion protein (predicted molecular weight of 100 kDa) encoded by the CDH2 gene. N-cadherin is involved in multiple processes, including neuron development and epithelial-mesenchymal transition (EMT). Due to the prominent role of EMT in cancer progression and metastasis, antibodies targeting either N-cadherin or E-cadherin are frequently used together to study the EMT process: the upregulation of N-cadherin followed by the downregulation of E-cadherin.

## Applications

## Application Note

\*Optimal dilutions/concentrations should be determined by the researcher.

Suggested dilution	Recommended dilution
WB	1:500-1:3000
ICC/IF	1:100-1:1000
IHC-P	1:100-1:1000
IHC-Fr	1:100-1:1000

Not tested in other applications.

**Calculated MW** 100 kDa. ( [Note](#) )

## Properties

<b>Form</b>	Liquid
<b>Buffer</b>	PBS, 1% BSA, 20% Glycerol
<b>Preservative</b>	0.025% ProClin 300
<b>Storage</b>	Store as concentrated solution. Centrifuge briefly prior to opening vial. For short-term storage (1-2 weeks), store at 4°C. For long-term storage, aliquot and store at -20°C or below. Avoid multiple freeze-thaw cycles.
<b>Concentration</b>	0.15 mg/ml (Please refer to the vial label for the specific concentration.)
<b>Immunogen</b>	Synthetic peptide encompassing a sequence within the Intracellular domain of human N-Cadherin. The exact sequence is proprietary.



For full product information, images and publications, please visit our [website](#).

Date 2025 / 07 / 18 Page 1 of 2

**Purification** Purified by antigen-affinity chromatography.

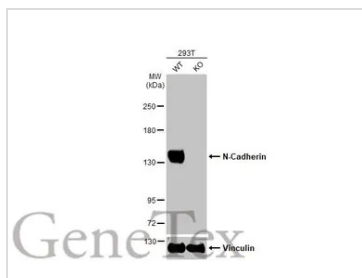
**Conjugation** Unconjugated

## Note

For laboratory research use only. Not for any clinical, therapeutic, or diagnostic use in humans or animals. Not for animal or human consumption.

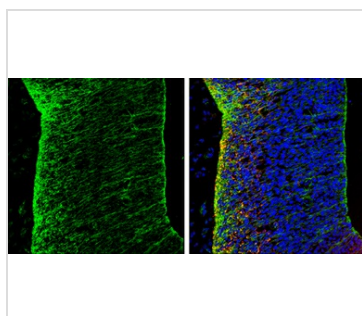
Purchasers shall not, and agree not to enable third parties to, analyze, copy, reverse engineer or otherwise attempt to determine the structure or sequence of the product.

## DATA IMAGES



### GTx127345 WB Image

Wild-type (WT) and N-Cadherin knockout (KO) 293T cell extracts (30 µg) were separated by 5% SDS-PAGE, and the membrane was blotted with N-Cadherin antibody (GTx127345) diluted at 1:1000. The HRP-conjugated anti-rabbit IgG antibody (GTx213110-01) was used to detect the primary antibody.



### GTx127345 IHC-Fr Image

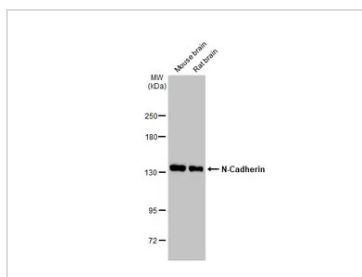
N-Cadherin antibody detects N-Cadherin protein expression by immunohistochemical analysis.

Sample: Frozen sectioned E13.5 Rat brain.

Green: N-Cadherin protein stained by N-Cadherin antibody (GTx127345) diluted at 1:250.

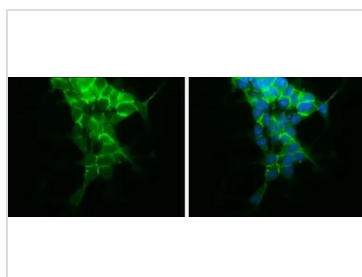
Red: beta Tubulin 3/ TUJ1, a mature neuron marker, stained by beta Tubulin 3/ TUJ1 antibody [GT11710] (GTx631836) diluted at 1:500.

Blue: Fluoroshield with DAPI (GTx30920).



### GTx127345 WB Image

Various tissue extracts (50 µg) were separated by 5% SDS-PAGE, and the membrane was blotted with N-Cadherin antibody (GTx127345) diluted at 1:5000. The HRP-conjugated anti-rabbit IgG antibody (GTx213110-01) was used to detect the primary antibody.



### GTx127345 ICC/IF Image

N-Cadherin antibody detects N-Cadherin protein at cell membrane by immunofluorescent analysis.

Sample: SH-SY5Y cells were fixed in 4% paraformaldehyde at RT for 15 min.

Green: N-Cadherin protein stained by N-Cadherin antibody (GTx127345) diluted at 1:500.

Blue: Hoechst 33342 staining.



For full product information, images and publications, please visit our [website](https://www.genetex.com).