

## LC3B antibody

Cat. No. GTX127375

<b>Host</b>	Rabbit
<b>Clonality</b>	Polyclonal
<b>Isotype</b>	IgG
<b>Applications</b>	WB, ICC/IF, IHC-P, IHC-Fr, FCM, IP, EM
<b>Reactivity</b>	Human, Mouse, Rat, Guinea pig, Pig, Mosquito

References ( 122 )

★★★★☆ Review ( 14 )

Package

100 µl, 25 µl

## PRODUCT

## Summary

LC3B antibody recognizes LC3B, an autophagosomal membrane structural protein with a predicted molecular weight of 14.7 kDa. LC3B protein is a member of the highly conserved Atg8 protein family, which encompasses the LC3 and GABARAP subfamilies. The key function of LC3B involves autophagy substrate selection during autophagosome formation. Therefore, LC3B antibody is of great utility for the study of autophagosome biogenesis.

## Applications

## Application Note

\*Optimal dilutions/concentrations should be determined by the researcher.

Suggested dilution	Recommended dilution
WB	1:500-1:3000
ICC/IF	1:100-1:1000
IHC-P	1:100-1:1000
IHC-Fr	Assay dependent
FCM	1:50-1:200
IP	1:100-1:500
EM	Assay dependent

Not tested in other applications.

**Calculated MW** 15 kDa. ([Note](#))

**Product Note** Cross-reactivity may occur with other LC3 isoforms

## Properties

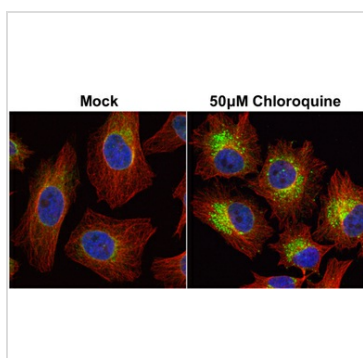
<b>Form</b>	Liquid
<b>Buffer</b>	PBS, 1% BSA, 20% Glycerol
<b>Preservative</b>	0.025% ProClin 300
<b>Storage</b>	Store as concentrated solution. Centrifuge briefly prior to opening vial. For short-term storage (1-2 weeks), store at 4°C. For long-term storage, aliquot and store at -20°C or below. Avoid multiple freeze-thaw cycles.



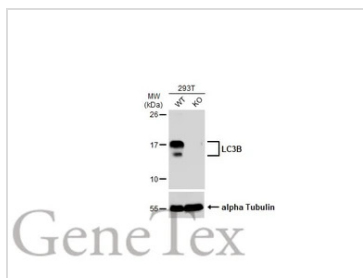
For full product information, images and publications, please visit our [website](#).

Date 2026 / 04 / 05 Page 1 of 2

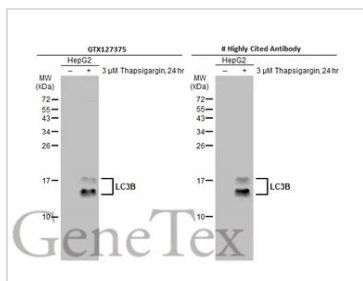
<b>Concentration</b>	0.34 mg/ml (Please refer to the vial label for the specific concentration.)
<b>Immunogen</b>	Carrier-protein conjugated synthetic peptide encompassing a sequence within the N-terminus region of human LC3B. The exact sequence is proprietary.
<b>Purification</b>	Purified by antigen-affinity chromatography.
<b>Conjugation</b>	Unconjugated
<b>Note</b>	For laboratory research use only. Not for any clinical, therapeutic, or diagnostic use in humans or animals. Not for animal or human consumption.  Purchasers shall not, and agree not to enable third parties to, analyze, copy, reverse engineer or otherwise attempt to determine the structure or sequence of the product.

**DATA IMAGES**

**GTx127375 ICC/IF Image**

LC3B antibody detects LC3B protein at autophagosome by immunofluorescent analysis.  
 Samples: HeLa cells mock (left) and treated with 50µM Chloroquine for 24 hr (right) were fixed in 4% paraformaldehyde at RT for 15 min.  
 Green: LC3B protein stained by LC3B antibody (GTx127375) diluted at 1:2000.  
 Red: alpha Tubulin, a cytoskeleton marker, stained by alpha Tubulin antibody [GT114] (GTx628802) diluted at 1:1000.  
 Blue: Hoechst 33342 staining.


**GTx127375 WB Image**

Wild-type (WT) and LC3B knockout (KO) 293T cell extracts (30 µg) were separated by 15% SDS-PAGE, and the membrane was blotted with LC3B antibody (GTx127375) diluted at 1:500. The HRP-conjugated anti-rabbit IgG antibody (GTx213110-01) was used to detect the primary antibody, and the signal was developed with Trident ECL plus-Enhanced.


**GTx127375 WB Image**

Untreated (-) and treated (+) HepG2 whole cell extracts (30 µg) were separated by 15% SDS-PAGE, and the membranes were blotted with LC3B antibody (GTx127375) diluted at 1:1000 and competitor's antibody (# Highly Cited Antibody) diluted at 1:1000. The HRP-conjugated anti-rabbit IgG antibody (GTx213110-01) was used to detect the primary antibody.

\*The competitor is not affiliated with GeneTex and does not endorse this product.



For full product information, images and publications, please visit our [website](#).