

HA tag antibody

Cat. No. GTX127376

| | |
|---------------------|---------------------|
| Host | Chicken |
| Clonality | Polyclonal |
| Isotype | IgY |
| Applications | WB |
| Reactivity | Species independent |

Package
100 µl, 25 µl

Applications

Application Note

*Optimal dilutions/concentrations should be determined by the researcher.

| Suggested dilution | Recommended dilution |
|--------------------|----------------------|
| WB | 1:5000-1:20000 |

Not tested in other applications.

Properties

| | |
|----------------------|--|
| Form | Liquid |
| Buffer | PBS, 40% Glycerol |
| Preservative | 0.01% Thimerosal |
| Storage | Store as concentrated solution. Centrifuge briefly prior to opening vial. For short-term storage (1-2 weeks), store at 4°C. For long-term storage, aliquot and store at -20°C or below. Avoid multiple freeze-thaw cycles. |
| Concentration | 1 mg/ml (Please refer to the vial label for the specific concentration.) |
| Immunogen | The immunogen used to generate this antibody corresponds to HA tag |
| Purification | Purified by antigen-affinity chromatography. |
| Conjugation | Unconjugated |

Note

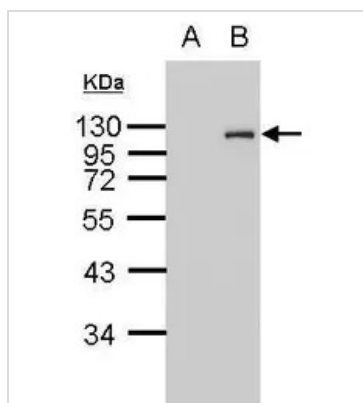
For laboratory research use only. Not for any clinical, therapeutic, or diagnostic use in humans or animals. Not for animal or human consumption.

Purchasers shall not, and agree not to enable third parties to, analyze, copy, reverse engineer or otherwise attempt to determine the structure or sequence of the product.



For full product information, images and publications, please visit our [website](#).

DATA IMAGES



GTX127376 WB Image

Western blot analysis of extracts from untransfected control cells and transfected cells overexpressing HA tagged protein (~100 kDa), using HA tag antibody. A: Non-transfected lysate (10 ug). B: Transfected lysate (10 ug). 12 % SDS PAGE GTX127376 diluted at 1:20000



For full product information, images and publications, please visit our [website](https://www.genetex.com).