

RFP antibody

Cat. No. GTX127897

Host	Rabbit
Clonality	Polyclonal
Isotype	IgG
Applications	WB, ICC/IF, IP
Reactivity	Species independent

References (11)

Package

100 µl, 25 µl

PRODUCT

Summary

RFP antibody recognizes the red fluorescent protein (RFP), a fluorophore often used in conjunction with the green fluorescent protein (GFP). Like GFP, RFP allows visualization of fusion proteins in cells and is one of the most frequently used tools to monitor in vivo biological processes. This RFP antibody does not cross-react with the GFP protein.

Applications

Application Note

*Optimal dilutions/concentrations should be determined by the researcher.

Suggested dilution	Recommended dilution
WB	1:5000-1:20000
ICC/IF	1:100-1:5000
IP	1:10000

Not tested in other applications.

Calculated MW 27 kDa. ([Note](#))

Product Note This antibody is specific for RFP and does not cross react with GFP and mcherry.

Properties

Form	Liquid
Buffer	PBS, 1% BSA, 20% Glycerol
Preservative	0.025% ProClin 300
Storage	Store as concentrated solution. Centrifuge briefly prior to opening vial. For short-term storage (1-2 weeks), store at 4°C. For long-term storage, aliquot and store at -20°C or below. Avoid multiple freeze-thaw cycles.
Concentration	0.08 mg/ml (Please refer to the vial label for the specific concentration.)
Immunogen	Full length RFP recombinant protein
Purification	Purified by antigen-affinity chromatography.
Conjugation	Unconjugated



For full product information, images and publications, please visit our [website](#).

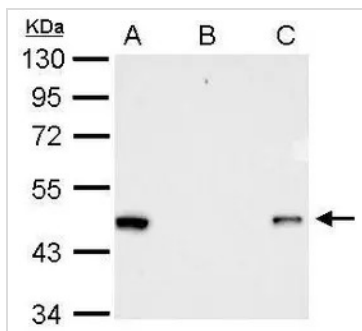
Date 2025 / 09 / 03 Page 1 of 2

For laboratory research use only. Not for any clinical, therapeutic, or diagnostic use in humans or animals. Not for animal or human consumption.

Note

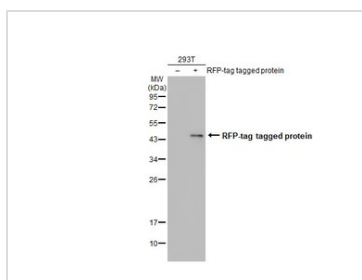
Purchasers shall not, and agree not to enable third parties to, analyze, copy, reverse engineer or otherwise attempt to determine the structure or sequence of the product.

DATA IMAGES



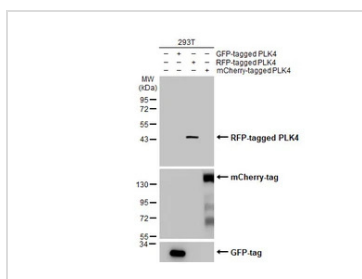
GTX127897 IP Image

RFP antibody Immunoprecipitation of RFP-tagged protein. HeLa transfected lysates were subjected to immunoprecipitation using (B) normal rabbit IgG or (C) 2.5 ug of anti-RFP antibody (GTX127897). (A) Input, 15ug of HeLa transfected lysate. The precipitated protein was detected by GTX127897 diluted at 1:10000.



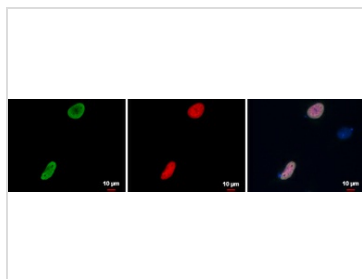
GTX127897 WB Image

Non-transfected (-) and transfected (+) 293T whole cell extracts (30 µg) were separated by 12% SDS-PAGE, and the membrane was blotted with RFP antibody (GTX127897) diluted at 1:10000. The HRP-conjugated anti-rabbit IgG antibody (GTX213110-01) was used to detect the primary antibody.



GTX127897 WB Image

Non-transfected (-) and transfected (+) 293T whole cell extracts (30 µg) were separated by 12% SDS-PAGE, and the membrane was blotted with RFP antibody (GTX127897) diluted at 1:10000. The HRP-conjugated anti-rabbit IgG antibody (GTX213110-01) was used to detect the primary antibody.



GTX127897 ICC/IF Image

RFP antibody detects RFP protein at by immunofluorescent analysis.

Sample: HeLa cells were fixed in 4% paraformaldehyde at RT for 15 min.

Green: RFP protein stained by RFP antibody (GTX127897) diluted at 1:5000.

Red: RFP is expressed in the RFP-fusion protein transfected cell.

Blue: Hoechst 33342 staining.

The cell of merger panel with no RFP expressed as a negative control.



For full product information, images and publications, please visit our [website](https://www.genetex.com).