

## RFP antibody

**Cat. No. GTX127897**

<b>Host</b>	Rabbit
<b>Clonality</b>	Polyclonal
<b>Isotype</b>	IgG
<b>Applications</b>	WB, ICC/IF, IP
<b>Reactivity</b>	Species independent

References ( 10 )

Package

100 µl, 25 µl

### PRODUCT

#### Summary

RFP antibody recognizes the red fluorescent protein (RFP), a fluorophore often used in conjunction with the green fluorescent protein (GFP). Like GFP, RFP allows visualization of fusion proteins in cells and is one of the most frequently used tools to monitor in vivo biological processes. This RFP antibody does not cross-react with the GFP protein.

#### Applications

#### Application Note

\*Optimal dilutions/concentrations should be determined by the researcher.

Suggested dilution	Recommended dilution
WB	1:5000-1:20000
ICC/IF	1:100-1:5000
IP	1:10000

Not tested in other applications.

#### Calculated MW

27 kDa. ( [Note](#) )

#### Product Note

This antibody is specific for RFP and does not cross react with GFP and mcherry.

### Properties

<b>Form</b>	Liquid
<b>Buffer</b>	PBS, 1% BSA, 20% Glycerol
<b>Preservative</b>	0.025% ProClin 300
<b>Storage</b>	Store as concentrated solution. Centrifuge briefly prior to opening vial. For short-term storage (1-2 weeks), store at 4°C. For long-term storage, aliquot and store at -20°C or below. Avoid multiple freeze-thaw cycles.
<b>Concentration</b>	0.08 mg/ml (Please refer to the vial label for the specific concentration.)
<b>Immunogen</b>	Full length RFP recombinant protein
<b>Purification</b>	Purified by antigen-affinity chromatography.
<b>Conjugation</b>	Unconjugated

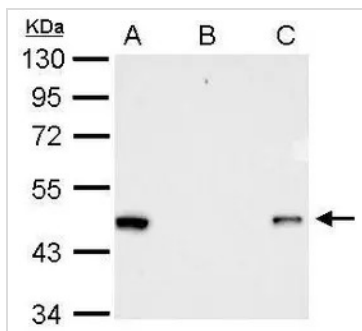


For full product information, images and publications, please visit our [website](#).

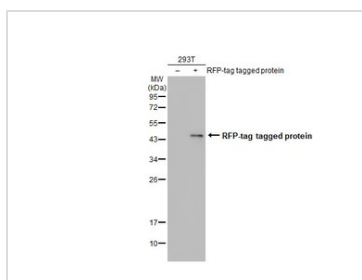
For laboratory research use only. Not for any clinical, therapeutic, or diagnostic use in humans or animals. Not for animal or human consumption.

**Note**

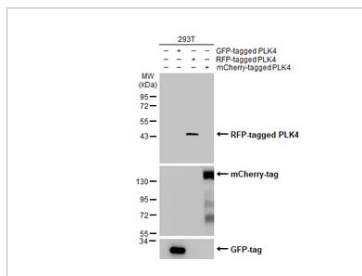
Purchasers shall not, and agree not to enable third parties to, analyze, copy, reverse engineer or otherwise attempt to determine the structure or sequence of the product.

**DATA IMAGES**

**GTx127897 IP Image**

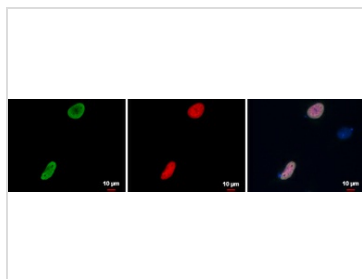
RFP antibody Immunoprecipitation of RFP-tagged protein. HeLa transfected lysates were subjected to immunoprecipitation using (B) normal rabbit IgG or (C) 2.5 ug of anti-RFP antibody (GTx127897). (A) Input, 15ug of HeLa transfected lysate. The precipitated protein was detected by GTx127897 diluted at 1:10000.


**GTx127897 WB Image**

Non-transfected (–) and transfected (+) 293T whole cell extracts (30 µg) were separated by 12% SDS-PAGE, and the membrane was blotted with RFP antibody (GTx127897) diluted at 1:10000. The HRP-conjugated anti-rabbit IgG antibody (GTx213110-01) was used to detect the primary antibody.


**GTx127897 WB Image**

Non-transfected (–) and transfected (+) 293T whole cell extracts (30 µg) were separated by 12% SDS-PAGE, and the membrane was blotted with RFP antibody (GTx127897) diluted at 1:10000. The HRP-conjugated anti-rabbit IgG antibody (GTx213110-01) was used to detect the primary antibody.


**GTx127897 ICC/IF Image**

RFP antibody detects RFP protein at by immunofluorescent analysis.

Sample: HeLa cells were fixed in 4% paraformaldehyde at RT for 15 min.

Green: RFP protein stained by RFP antibody (GTx127897) diluted at 1:5000.

Red: RFP is expressed in the RFP-fusion protein transfected cell.

Blue: Hoechst 33342 staining.

The cell of merger panel with no RFP expressed as a negative control.



For full product information, images and publications, please visit our [website](https://www.genetex.com).