

PAK6 antibody

Cat. No. GTX127915

Host	Rabbit
Clonality	Polyclonal
Isotype	IgG
Applications	WB, ICC/IF, IHC-P, IP
Reactivity	Human

References (3)

Package

100 µl, 25 µl

Applications

Application Note

*Optimal dilutions/concentrations should be determined by the researcher.

Suggested dilution	Recommended dilution
WB	1:500-1:3000
ICC/IF	Assay dependent
IHC-P	1:100-1:1000
IP	1:100-1:500

Not tested in other applications.

Calculated MW 75 kDa. ([Note](#))

Properties

Form	Liquid
Buffer	PBS, 20% Glycerol
Preservative	0.01% Thimerosal
Storage	Store as concentrated solution. Centrifuge briefly prior to opening vial. For short-term storage (1-2 weeks), store at 4°C. For long-term storage, aliquot and store at -20°C or below. Avoid multiple freeze-thaw cycles.
Concentration	1 mg/ml (Please refer to the vial label for the specific concentration.)
Immunogen	Recombinant protein encompassing a sequence within the N-terminus region of human PAK6. The exact sequence is proprietary.
Purification	Purified by antigen-affinity chromatography.
Conjugation	Unconjugated



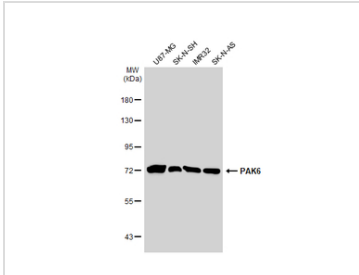
For full product information, images and publications, please visit our [website](#).

For laboratory research use only. Not for any clinical, therapeutic, or diagnostic use in humans or animals. Not for animal or human consumption.

Note

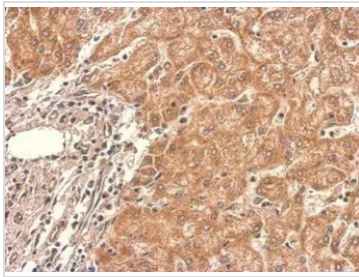
Purchasers shall not, and agree not to enable third parties to, analyze, copy, reverse engineer or otherwise attempt to determine the structure or sequence of the product.

DATA IMAGES



GTX127915 WB Image

Various whole cell extracts (30 μ g) were separated by 7.5% SDS-PAGE, and the membrane was blotted with PAK6 antibody (GTX127915) diluted at 1:1000. The HRP-conjugated anti-rabbit IgG antibody (GTX213110-01) was used to detect the primary antibody.



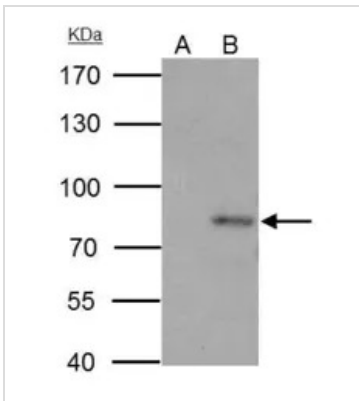
GTX127915 IHC-P Image

PAK6 antibody detects PAK6 protein at cytosol on human hepatoma by immunohistochemical analysis.

Sample: Paraffin-embedded hepatoma.

PAK6 antibody (GTX127915) dilution: 1:500.

Antigen Retrieval: Trilogy™ (EDTA based, pH 8.0) buffer, 15min



GTX127915 IP Image

PAK6 antibody immunoprecipitates PAK6 protein in IP experiments.

IP samples: PC-3 whole cell extract

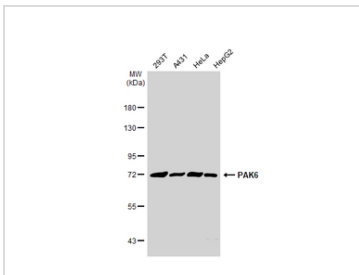
A. Control with 4 μ g of preimmune Rabbit IgG

B. Immunoprecipitation of PAK6 protein by 4 μ g PAK6 antibody (GTX127915)

7.5 % SDS-PAGE

The immunoprecipitated PAK6 protein was detected by PAK6 antibody (GTX127915) diluted at 1:500.

[EasyBlot anti-rabbit IgG (GTX221666-01) was used as a secondary reagent]



GTX127915 WB Image

Various whole cell extracts (30 μ g) were separated by 7.5% SDS-PAGE, and the membrane was blotted with PAK6 antibody (GTX127915) diluted at 1:1000. The HRP-conjugated anti-rabbit IgG antibody (GTX213110-01) was used to detect the primary antibody.



For full product information, images and publications, please visit our [website](#).