

NFAT1 antibody

Cat. No. GTX127932

Host	Rabbit
Clonality	Polyclonal
Isotype	IgG
Applications	WB, ICC/IF, IP
Reactivity	Human, Mouse

References (4)

Package

100 µl, 25 µl

Applications

Application Note

*Optimal dilutions/concentrations should be determined by the researcher.

Suggested dilution	Recommended dilution
WB	1:500-1:3000
ICC/IF	1:100-1:1000
IP	1:100-1:500

Not tested in other applications.

Calculated MW 100 kDa. ([Note](#))

Properties

Form	Liquid
Buffer	PBS, 20% Glycerol
Preservative	0.01% Thimerosal
Storage	Store as concentrated solution. Centrifuge briefly prior to opening vial. For short-term storage (1-2 weeks), store at 4°C. For long-term storage, aliquot and store at -20°C or below. Avoid multiple freeze-thaw cycles.
Concentration	1 mg/ml (Please refer to the vial label for the specific concentration.)
Immunogen	Carrier-protein conjugated synthetic peptide encompassing a sequence within the N-terminus region of mouse NFAT1. The exact sequence is proprietary.
Purification	Purified by antigen-affinity chromatography.
Conjugation	Unconjugated

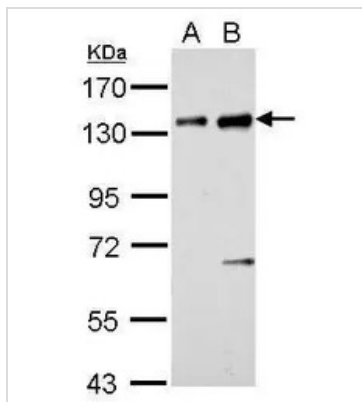
Note

For laboratory research use only. Not for any clinical, therapeutic, or diagnostic use in humans or animals. Not for animal or human consumption.

Purchasers shall not, and agree not to enable third parties to, analyze, copy, reverse engineer or otherwise attempt to determine the structure or sequence of the product.



For full product information, images and publications, please visit our [website](#).

DATA IMAGES

GTK127932 WB Image

NFAT1 antibody detects NFATC2 protein by western blot analysis.

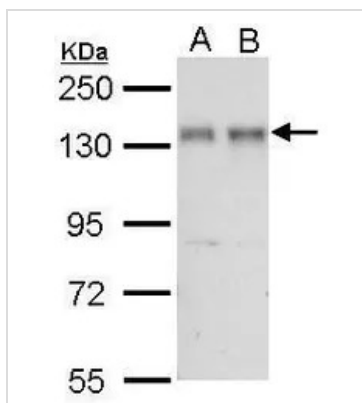
A. 30 µg BCL-1 whole cell lysate/extract

B. 30 µg Raw264.7 whole cell lysate/extract

7.5% SDS-PAGE

NFAT1 antibody (GTK127932) dilution: 1:1000

The HRP-conjugated anti-rabbit IgG antibody (GTK213110-01) was used to detect the primary antibody.


GTK127932 WB Image

NFAT1 antibody detects NFATC2 protein by western blot analysis.

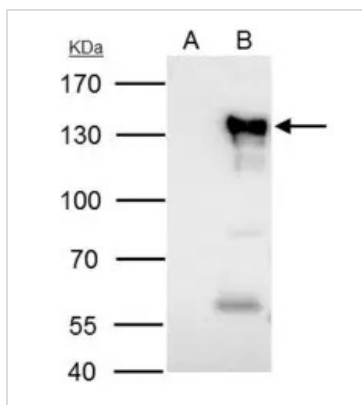
A. 30 µg Jurkat whole cell lysate/extract

B. 30 µg Raji whole cell lysate/extract

7.5% SDS-PAGE

NFAT1 antibody (GTK127932) dilution: 1:1000

The HRP-conjugated anti-rabbit IgG antibody (GTK213110-01) was used to detect the primary antibody.


GTK127932 IP Image

NFAT1 antibody immunoprecipitates NFAT1 protein in IP experiments.

IP samples: Raji whole cell extract

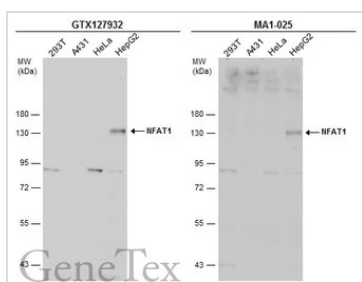
A. Control with 4 µg of preimmune Rabbit IgG

B. Immunoprecipitation of NFAT1 protein by 4 µg NFAT1 antibody (GTK127932)

7.5 % SDS-PAGE

The immunoprecipitated NFAT1 protein was detected by NFAT1 antibody (GTK127932) diluted at 1:500.

[EasyBlot anti-rabbit IgG (GTK221666-01) was used as a secondary reagent]


GTK127932 WB Image

Various whole cell extracts (30 µg) were separated by 7.5% SDS-PAGE, and the membranes were blotted

with NFAT1 antibody (GTK127932) diluted at 1:500 and competitor's antibody (MA1-025) diluted at 1:500.

The HRP-conjugated anti-rabbit IgG antibody (GTK213110-01) was used to detect the primary antibody.

*The competitor is not affiliated with GeneTex and does not endorse this product.



For full product information, images and publications, please visit our [website](https://www.genetex.com).