

Grp78 antibody

Cat. No. GTX127934

Host	Rabbit
Clonality	Polyclonal
Isotype	IgG
Application	WB, ICC/IF, IHC-P
Reactivity	Human, Mouse, Rat

Reference (4)

★★★★☆ Review (1)

Package

100 µl, 25 µl

APPLICATION

Application Note

*Optimal dilutions/concentrations should be determined by the researcher.

Suggested dilution	Recommended dilution
WB	1:5000-1:20000
ICC/IF	1:100-1:1000
IHC-P	1:100-1:1000

Not tested in other applications.

Calculated MW	72 kDa. (Note)
Product Note	Knockdown/Knockout validation was supported by customer review data.

PROPERTIES

Form	Liquid
Buffer	PBS, 20% Glycerol
Preservative	0.025% ProClin 300
Storage	Store as concentrated solution. Centrifuge briefly prior to opening vial. For short-term storage (1-2 weeks), store at 4°C. For long-term storage, aliquot and store at -20°C or below. Avoid multiple freeze-thaw cycles.
Concentration	0.14 mg/ml (Please refer to the vial label for the specific concentration.)
Immunogen	Carrier-protein conjugated synthetic peptide encompassing a sequence within the C-terminus region of mouse Grp78. The exact sequence is proprietary.
Purification	Purified by antigen-affinity chromatography.
Conjugation	Unconjugated

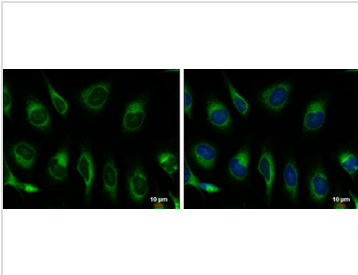


For full product information, images and publications, please visit our [website](#).

For laboratory research use only. Not for any clinical, therapeutic, or diagnostic use in humans or animals. Not for animal or human consumption.

Note

Purchasers shall not, and agree not to enable third parties to, analyze, copy, reverse engineer or otherwise attempt to determine the structure or sequence of the product.

DATA IMAGES

GTx127934 ICC/IF Image

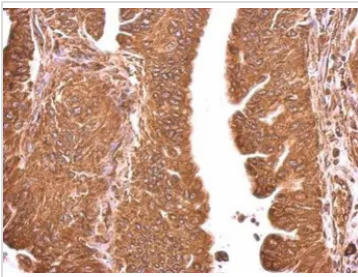
Hspa5 antibody detects Hspa5 protein at endoplasmic reticulum by immunofluorescent analysis.

Sample: HeLa cells were fixed in ice-cold MeOH for 5 min.

Green: Hspa5 protein stained by Hspa5 antibody (GTx127934) diluted at 1:500.

Blue: Hoechst 33342 staining.

Scale bar = 10 µm.

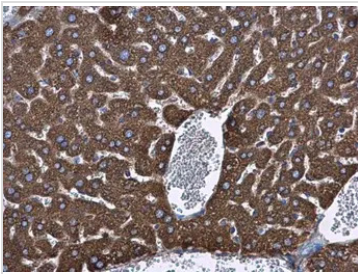

GTx127934 IHC-P Image

Hspa5 antibody detects Hspa5 protein at cytosol on human gastric cancer by immunohistochemical analysis.

Sample: Paraffin-embedded gastric cancer.

Hspa5 antibody (GTx127934) dilution: 1:500.

Antigen Retrieval: Trilogy™ (EDTA based, pH 8.0) buffer, 15min

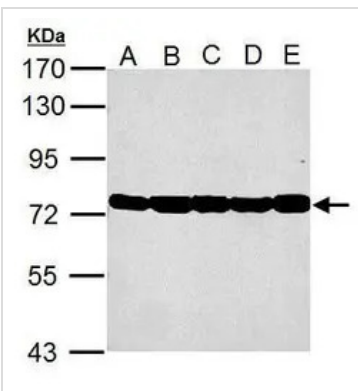

GTx127934 IHC-P Image

Hspa5 antibody detects Hspa5 protein at cytoplasm in mouse liver by immunohistochemical analysis.

Sample: Paraffin-embedded mouse liver.

Hspa5 antibody (GTx127934) diluted at 1:500.

Antigen Retrieval: Citrate buffer, pH 6.0, 15 min


GTx127934 WB Image

Sample (30 ug of whole cell lysate)

A: NIH-3T-3

B: JC

C: BCL-1

D: C2C12

E: Raw264.7

7.5% SDS PAGE

GTx127934 diluted at 1:10000



For full product information, images and publications, please visit our [website](https://www.genetex.com).