

## HMGB1 + HMGB2 antibody

Cat. No. GTX127972

Host	Rabbit
Clonality	Polyclonal
Isotype	IgG
Applications	WB, ICC/IF, IHC-P
Reactivity	Human, Mouse, Rat

Package  
100 µl, 25 µl

## Applications

## Application Note

\*Optimal dilutions/concentrations should be determined by the researcher.

Suggested dilution	Recommended dilution
WB	1:500-1:20000
ICC/IF	1:100-1:2000
IHC-P	1:100-1:1000

Not tested in other applications.

Calculated MW 24 kDa. ( [Note](#) )

## Properties

Form	Liquid
Buffer	PBS, 20% Glycerol
Preservative	0.01% Thimerosal
Storage	Store as concentrated solution. Centrifuge briefly prior to opening vial. For short-term storage (1-2 weeks), store at 4°C. For long-term storage, aliquot and store at -20°C or below. Avoid multiple freeze-thaw cycles.
Concentration	1 mg/ml (Please refer to the vial label for the specific concentration.)
Immunogen	Full length human HMGB1 + HMGB2 Recombinant protein.
Purification	Purified by antigen-affinity chromatography.
Conjugation	Unconjugated

## Note

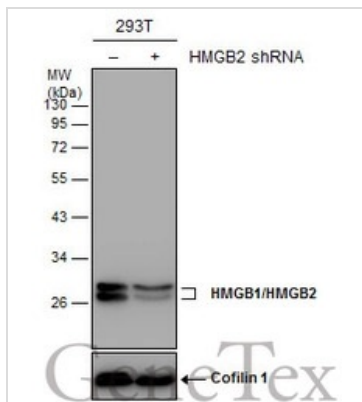
For laboratory research use only. Not for any clinical, therapeutic, or diagnostic use in humans or animals. Not for animal or human consumption.

Purchasers shall not, and agree not to enable third parties to, analyze, copy, reverse engineer or otherwise attempt to determine the structure or sequence of the product.



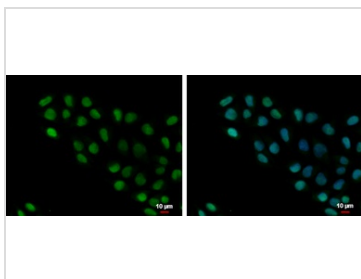
For full product information, images and publications, please visit our [website](#).

DATA IMAGES



**GTX127972 WB Image**

Non-transfected (–) and transfected (+) 293T whole cell extracts (30 µg) were separated by 12% SDS-PAGE, and the membrane was blotted with HMGB1/HMGB2 antibody (GTX127972) diluted at 1:20000.



**GTX127972 ICC/IF Image**

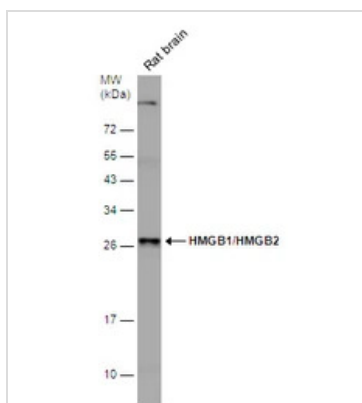
HMGB1/HMGB2 antibody detects HMGB1/HMGB2 protein at nucleus by immunofluorescent analysis.

Sample: A375 cells were fixed in 4% paraformaldehyde at RT for 15 min.

Green: HMGB1/HMGB2 protein stained by HMGB1/HMGB2 antibody (GTX127972) diluted at 1:500.

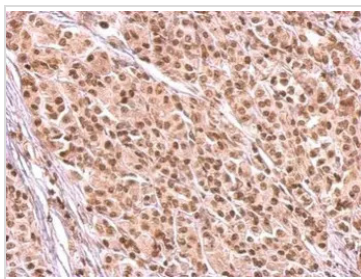
Blue: Hoechst 33342 staining.

Scale bar = 10 µm.



**GTX127972 WB Image**

Rat tissue extract (50 µg) was separated by 12% SDS-PAGE, and the membrane was blotted with HMGB1/HMGB2 antibody (GTX127972) diluted at 1:2000.



**GTX127972 IHC-P Image**

HMGB1/HMGB2 antibody detects HMGB2 protein at nucleus on human duodenal adenocarcinoma tissue by immunohistochemical analysis.

Sample: Paraffin-embedded human duodenal adenocarcinoma tissue.

HMGB1/HMGB2 antibody (GTX127972) dilution: 1:500.

Antigen Retrieval: Trilogy™ (EDTA based, pH 8.0) buffer, 15min



For full product information, images and publications, please visit our [website](https://www.genetex.com).