

TM7SF1/GPR137B antibody

Cat. No. GTX12800

| | |
|-------------|--|
| Host | Rabbit |
| Clonality | Polyclonal |
| Isotype | IgG |
| Application | ICC/IF, IHC-P |
| Reactivity | Human, Mouse, Rat, Rabbit, Bovine, Dog, Hamster, Chicken, Pig, Monkey, Horse |

Package

25 µg

APPLICATION

Application Note

*Optimal dilutions/concentrations should be determined by the researcher.

| Suggested dilution | Recommended dilution |
|--------------------|----------------------|
| ICC/IF | 6 - 12 µg/ml |
| IHC-P | 6 - 12 µg/ml |

Not tested in other applications.

Calculated MW 46 kDa. ([Note](#))

PROPERTIES

| | |
|---------------|--|
| Form | Liquid |
| Buffer | PBS |
| Preservative | 0.1% Sodium azide |
| Storage | Store as concentrated solution. Centrifuge briefly prior to opening vial. For short-term storage (1-2 weeks), store at 4°C. For long-term storage, aliquot and store at -20°C or below. Avoid multiple freeze-thaw cycles. |
| Concentration | 1 mg/ml (Please refer to the vial label for the specific concentration.) |
| Immunogen | Synthetic 16 amino acid peptide from 2nd cytoplasmic domain of human GPR137B / TM7SF1. |
| Purification | Purified by affinity chromatography |
| Conjugation | Unconjugated |

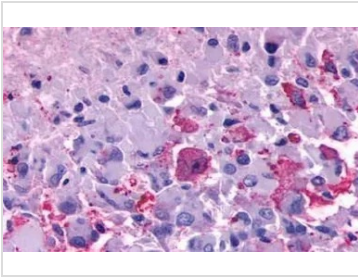
Note

For laboratory research use only. Not for any clinical, therapeutic, or diagnostic use in humans or animals. Not for animal or human consumption.

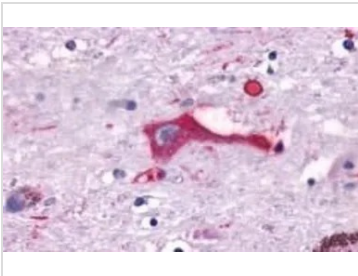
Purchasers shall not, and agree not to enable third parties to, analyze, copy, reverse engineer or otherwise attempt to determine the structure or sequence of the product.



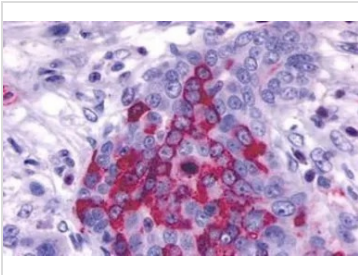
For full product information, images and publications, please visit our [website](#).

DATA IMAGES

GTX12800 IHC-P Image

IHC-P analysis of brain, glioblastoma tissue using GTX12800 TM7SF1/GPR137B antibody.

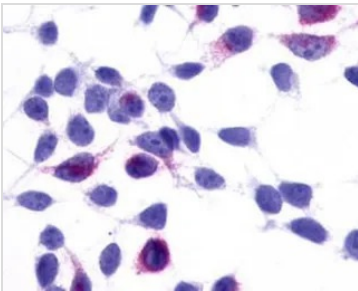

GTX12800 IHC-P Image

IHC-P analysis of brain, substantia nigra, neuron tissue using GTX12800 TM7SF1/GPR137B antibody.

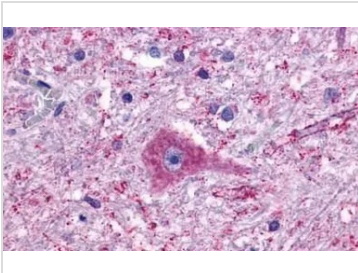

GTX12800 IHC-P Image

IHC-P analysis of human ovary, carcinoma tissue using GTX12800 TM7SF1/GPR137B antibody.

Antigen retrieval : Heat-induced antigen retrieval


GTX12800 ICC/IF Image

ICC/IF analysis of HEK293 transfected with TM7SF1/GPR137B using GTX12800 TM7SF1/GPR137B antibody.


GTX12800 IHC-P Image

IHC-P analysis of human brain tissue using GTX12800 TM7SF1/GPR137B antibody.

Antigen retrieval : Heat-induced antigen retrieval



For full product information, images and publications, please visit our [website](https://www.genetex.com).