

# CFDP1 antibody

**Cat. No. GTX128023**

<b>Host</b>	Rabbit
<b>Clonality</b>	Polyclonal
<b>Isotype</b>	IgG
<b>Application</b>	WB, ICC/IF, IHC-P, IHC-Fr
<b>Reactivity</b>	Human, Mouse

★★★★★ Review ( 1 )

**Package**  
100 µl, 25 µl

## APPLICATION

### Application Note

\*Optimal dilutions/concentrations should be determined by the researcher.

Suggested dilution	Recommended dilution
WB	1:500-1:3000
ICC/IF	1:100-1:1000
IHC-P	1:100-1:1000
IHC-Fr	1:100-1:1000

Not tested in other applications.

**Calculated MW** 34 kDa. ( [Note](#) )

## PROPERTIES

<b>Form</b>	Liquid
<b>Buffer</b>	PBS, 20% Glycerol
<b>Preservative</b>	0.01% Thimerosal
<b>Storage</b>	Store as concentrated solution. Centrifuge briefly prior to opening vial. For short-term storage (1-2 weeks), store at 4°C. For long-term storage, aliquot and store at -20°C or below. Avoid multiple freeze-thaw cycles.
<b>Concentration</b>	1 mg/ml (Please refer to the vial label for the specific concentration.)
<b>Immunogen</b>	Recombinant protein encompassing a sequence within the center region of human CFDP1. The exact sequence is proprietary.
<b>Purification</b>	Purified by antigen-affinity chromatography.
<b>Conjugation</b>	Unconjugated

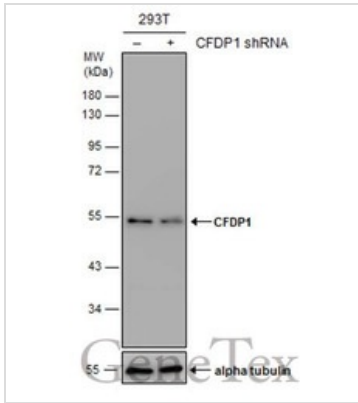


For full product information, images and publications, please visit our [website](#).

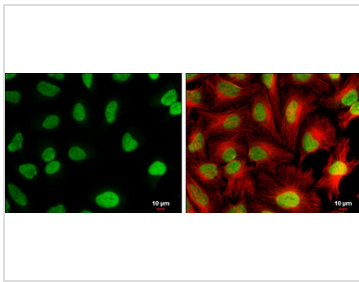
For laboratory research use only. Not for any clinical, therapeutic, or diagnostic use in humans or animals. Not for animal or human consumption.

**Note**

Purchasers shall not, and agree not to enable third parties to, analyze, copy, reverse engineer or otherwise attempt to determine the structure or sequence of the product.

**DATA IMAGES**

**GTx128023 WB Image**

Non-transfected (-) and transfected (+) 293T whole cell extracts (30 µg) were separated by 10% SDS-PAGE, and the membrane was blotted with CFDP1 antibody (GTx128023) diluted at 1:3000.


**GTx128023 ICC/IF Image**

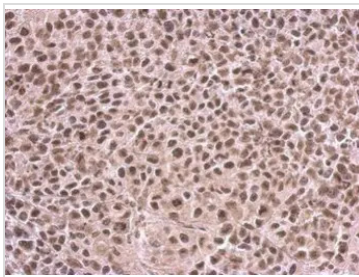
CFDP1 antibody detects CFDP1 protein at nucleus by immunofluorescent analysis.

Sample: HeLa cells were fixed in 4% paraformaldehyde at RT for 15 min.

Green: CFDP1 stained by CFDP1 antibody (GTx128023) diluted at 1:500.

Red: alpha Tubulin, a cytoskeleton marker, stained by alpha Tubulin antibody [GT114] (GTx628802) diluted at 1:500.

Scale bar = 10 µm.

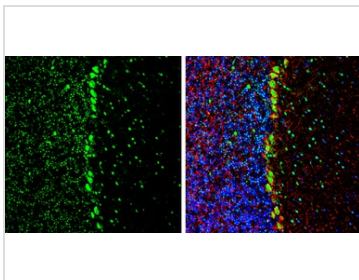

**GTx128023 IHC-P Image**

CFDP1 antibody detects CFDP1 protein at cytosol and nucleus on HeLa xenograft by immunohistochemical analysis.

Sample: Paraffin-embedded HeLa xenograft.

CFDP1 antibody (GTx128023) dilution: 1:500.

Antigen Retrieval: Trilogy™ (EDTA based, pH 8.0) buffer, 15min


**GTx128023 IHC-Fr Image**

CFDP1 antibody detects CFDP1 protein by immunohistochemical analysis.

Sample: Frozen-sectioned mouse cerebellum.

Green: CFDP1 stained by CFDP1 antibody (GTx128023) diluted at 1:250.

Red: NF-H, stained by NF-H antibody [GT114] (GTx634289) diluted at 1:500.

Blue: Fluoroshield with DAPI (GTx30920).

Antigen Retrieval: Citrate buffer, pH 6.0, 10 min



For full product information, images and publications, please visit our [website](https://www.genetex.com).