

PSRC1 antibody

Cat. No. GTX128047

Host	Rabbit
Clonality	Polyclonal
Isotype	IgG
Applications	WB, ICC/IF, IHC-P, IHC-Fr
Reactivity	Human, Mouse

References (5)

Package

100 µl, 25 µl

Applications

Application Note

*Optimal dilutions/concentrations should be determined by the researcher.

Suggested dilution	Recommended dilution
WB	1:500-1:20000
ICC/IF	1:100-1:1000
IHC-P	1:100-1:1000
IHC-Fr	1:100-1:1000

Not tested in other applications.

Calculated MW 39 kDa. ([Note](#))

Properties

Form	Liquid
Buffer	PBS, 20% Glycerol
Preservative	0.01% Thimerosal
Storage	Store as concentrated solution. Centrifuge briefly prior to opening vial. For short-term storage (1-2 weeks), store at 4°C. For long-term storage, aliquot and store at -20°C or below. Avoid multiple freeze-thaw cycles.
Concentration	0.86 mg/ml (Please refer to the vial label for the specific concentration.)
Immunogen	Recombinant protein encompassing a sequence within the center region of human PSRC1. The exact sequence is proprietary.
Purification	Purified by antigen-affinity chromatography.
Conjugation	Unconjugated



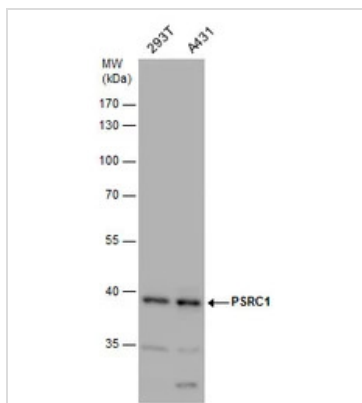
For full product information, images and publications, please visit our [website](#).

For laboratory research use only. Not for any clinical, therapeutic, or diagnostic use in humans or animals. Not for animal or human consumption.

Note

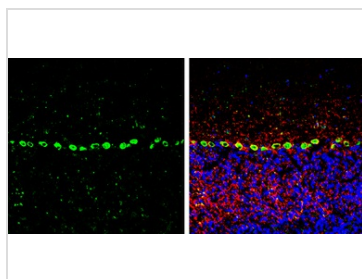
Purchasers shall not, and agree not to enable third parties to, analyze, copy, reverse engineer or otherwise attempt to determine the structure or sequence of the product.

DATA IMAGES



GTx128047 WB Image

PSRC1 antibody detects PSRC1 protein by western blot analysis. Various whole cell extracts (30 µg) were separated by 10% SDS-PAGE, and the membrane was blotted with PSRC1 antibody (GTx128047) diluted by 1:1000.



GTx128047 IHC-Fr Image

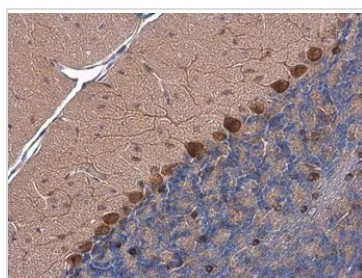
PSRC1 antibody detects PSRC1 protein by immunohistochemical analysis.

Sample: Frozen-sectioned mouse cerebellum.

Green: PSRC1 stained by PSRC1 antibody (GTx128047) diluted at 1:250.

Red: NF-H, stained by NF-H antibody [GT114] (GTx634289) diluted at 1:500.

Blue: Fluoroshield with DAPI (GTx30920).



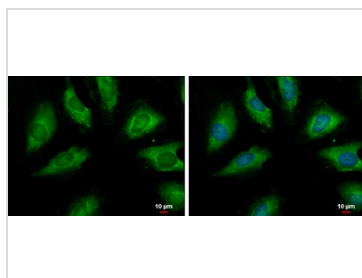
GTx128047 IHC-P Image

PSRC1 antibody detects PSRC1 protein at cytoplasm by immunohistochemical analysis.

Sample: Paraffin-embedded mouse brain.

PSRC1 stained by PSRC1 antibody (GTx128047) diluted at 1:500.

Antigen Retrieval: Citrate buffer, pH 6.0, 15 min



GTx128047 ICC/IF Image

PSRC1 antibody detects PSRC1 protein at cytoplasm by immunofluorescent analysis.

Sample: HeLa cells were fixed in 4% paraformaldehyde at RT for 15 min.

Green: PSRC1 protein stained by PSRC1 antibody (GTx128047) diluted at 1:500.

Blue: Hoechst 33342 staining.

Scale bar = 10 µm.



For full product information, images and publications, please visit our [website](https://www.genetex.com).