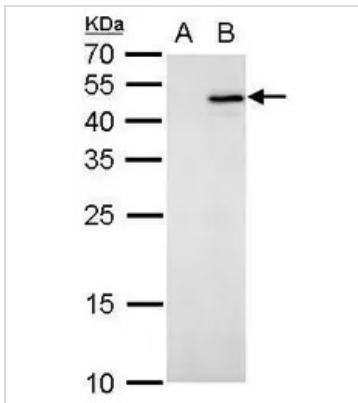




## DATA IMAGES

**GTX128051 WB Image**

IL28B antibody detects IL28B protein by Western blot analysis.

A. 30 µg 293T whole cell lysate/extract

B. 30 µg whole cell lysate/extract of GFP-human IL28B-transfected 293T cells

12 % SDS-PAGE

IL28B antibody (GTX128051) dilution: 1:5000



For full product information, images and publications, please visit our [website](#).