

ATG3 antibody

Cat. No. GTX128065

Host	Rabbit
Clonality	Polyclonal
Isotype	IgG
Application	WB
Reactivity	Human, Mouse, Rat

Package
100 µl, 25 µl

APPLICATION

Application Note

*Optimal dilutions/concentrations should be determined by the researcher.

Suggested dilution	Recommended dilution
WB	1:500-1:3000
Not tested in other applications.	

Calculated MW 36 kDa. ([Note](#))

PROPERTIES

Form	Liquid
Buffer	PBS, 20% Glycerol
Preservative	0.01% Thimerosal
Storage	Store as concentrated solution. Centrifuge briefly prior to opening vial. For short-term storage (1-2 weeks), store at 4°C. For long-term storage, aliquot and store at -20°C or below. Avoid multiple freeze-thaw cycles.
Concentration	1 mg/ml (Please refer to the vial label for the specific concentration.)
Immunogen	Recombinant protein encompassing a sequence within the center region of human ATG3. The exact sequence is proprietary.
Purification	Purified by antigen-affinity chromatography.
Conjugation	Unconjugated

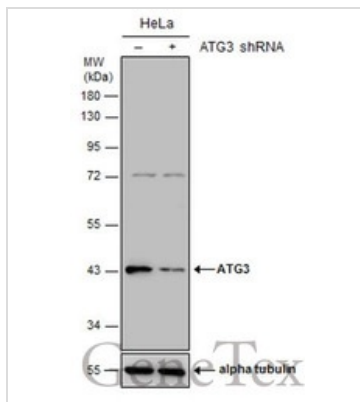
Note

For laboratory research use only. Not for any clinical, therapeutic, or diagnostic use in humans or animals. Not for animal or human consumption.

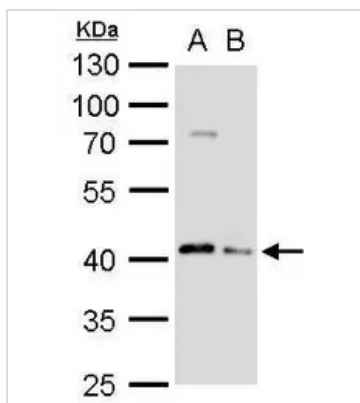
Purchasers shall not, and agree not to enable third parties to, analyze, copy, reverse engineer or otherwise attempt to determine the structure or sequence of the product.



For full product information, images and publications, please visit our [website](#).

DATA IMAGES

GTX128065 WB Image

Non-transfected (–) and transfected (+) HeLa whole cell extracts (30 µg) were separated by 10% SDS-PAGE, and the membrane was blotted with ATG3 antibody (GTX128065) diluted at 1:1000.


GTX128065 WB Image

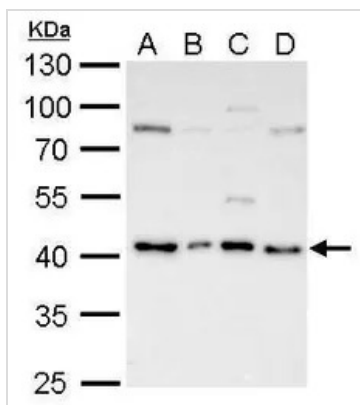
ATG3 antibody detects ATG3 protein by Western blot analysis.

A. 30 µg PC-12 whole cell lysate/extract

B. 30 µg Rat-2 whole cell lysate/extract

10 % SDS-PAGE

ATG3 antibody (GTX128065) dilution: 1:2000


GTX128065 WB Image

ATG3 antibody detects ATG3 protein by Western blot analysis.

A. 30 µg C8D30 whole cell lysate/extract

B. 30 µg NIH-3T3 whole cell lysate/extract

C. 30 µg BCL-1 whole cell lysate/extract

D. 30 µg Raw264.7 whole cell lysate/extract

10 % SDS-PAGE

ATG3 antibody (GTX128065) dilution: 1:1000



For full product information, images and publications, please visit our [website](http://www.genetex.com).