

BrdU antibody

Cat. No. GTX128091

Host	Rabbit
Clonality	Polyclonal
Isotype	IgG
Applications	ICC/IF, IHC-P, IHC-Fr, FCM
Reactivity	Species independent

References (16)

★★★★★ Review (3)

Package

100 µl, 25 µl

Applications

Application Note

*Optimal dilutions/concentrations should be determined by the researcher.

Suggested dilution	Recommended dilution
ICC/IF	1:100-1:1000
IHC-P	1:100-1:1000
IHC-Fr	Assay dependent
FCM	1:50-1:200

Not tested in other applications.

Properties

Form	Liquid
Buffer	PBS, 1% BSA, 20% Glycerol
Preservative	0.025% ProClin 300
Storage	Store as concentrated solution. Centrifuge briefly prior to opening vial. For short-term storage (1-2 weeks), store at 4°C. For long-term storage, aliquot and store at -20°C or below. Avoid multiple freeze-thaw cycles.
Concentration	0.36 mg/ml (Please refer to the vial label for the specific concentration.)
Immunogen	The immunogen used to generate this antibody corresponds to BrdU
Purification	Purified by antigen-affinity chromatography.
Conjugation	Unconjugated

Note

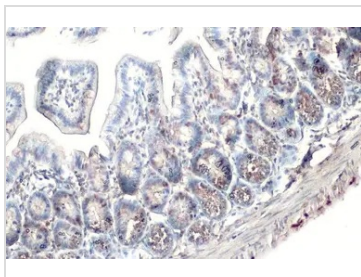
For laboratory research use only. Not for any clinical, therapeutic, or diagnostic use in humans or animals. Not for animal or human consumption.

Purchasers shall not, and agree not to enable third parties to, analyze, copy, reverse engineer or otherwise attempt to determine the structure or sequence of the product.



For full product information, images and publications, please visit our [website](#).

DATA IMAGES



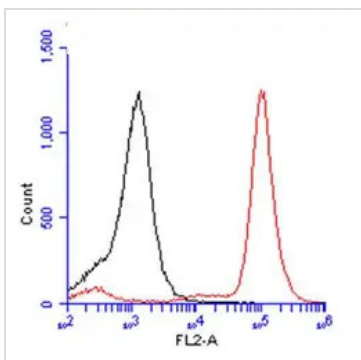
GTX128091 IHC-P Image

BrdU antibody detects Bromodeoxyuridine (BrdU) in mouse BrdU treated intestine by immunohistochemical analysis.

Sample: Paraffin-embedded mouse intestinal tissue pulsed with BrdU.

BrdU stained by BrdU antibody (GTX128091) diluted at 1:100.

Antigen Retrieval: Citrate buffer, pH 6.0, 15 min



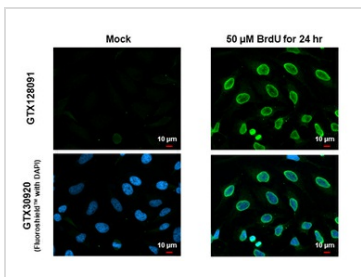
GTX128091 FCM Image

BrdU antibody (GTX128091) detects BrdU protein from HeLa treated with 10 μ M BrdU for 30 minutes and fixed in 4% paraformaldehyde at 4°C for 15 minutes by flow cytometry analysis.

Black: Unlabelled sample was used as a control.

Red: BrdU antibody (GTX128091) dilution: 1:50.

Acquisition of 20,000 events were collected for FACS analysis.



GTX128091 ICC/IF Image

BrdU antibody detects BrdU protein at nucleus and mitochondria by immunofluorescent analysis.

Sample: Mock and treated HeLa cells were fixed in 4% paraformaldehyde at RT for 15 min.

Green: BrdU stained by BrdU antibody (GTX128091) diluted at 1:1000.

Blue: Fluoroshield with DAPI (GTX30920).



For full product information, images and publications, please visit our [website](https://www.genetex.com).