

Dengue virus prM protein antibody

Cat. No. GTX128092

Host	Rabbit
Clonality	Polyclonal
Isotype	IgG
Applications	WB, ICC/IF
Reactivity	Dengue virus 2

References (14)

 Review (2)

Package

100 µl, 25 µl

Applications

Application Note

*Optimal dilutions/concentrations should be determined by the researcher.

Suggested dilution	Recommended dilution
WB	1:500-1:20000
ICC/IF	1:100-1:2000

Not tested in other applications.

Calculated MW 22 kDa. ([Note](#))

Product Note This antibody was raised against Dengue virus 2 prM protein, which may cross react with prM protein of Dengue virus 1/3/4.

Properties

Form	Liquid
Buffer	PBS, 1% BSA, 20% Glycerol
Preservative	0.025% ProClin 300
Storage	Store as concentrated solution. Centrifuge briefly prior to opening vial. For short-term storage (1-2 weeks), store at 4°C. For long-term storage, aliquot and store at -20°C or below. Avoid multiple freeze-thaw cycles.
Concentration	0.46 mg/ml (Please refer to the vial label for the specific concentration.)
Immunogen	Recombinant protein encompassing a sequence within the center region of Dengue virus PrM protein (Dengue virus 2 (strain 16681 PDK 53)). The exact sequence is proprietary.
Purification	Purified by antigen-affinity chromatography.
Conjugation	Unconjugated

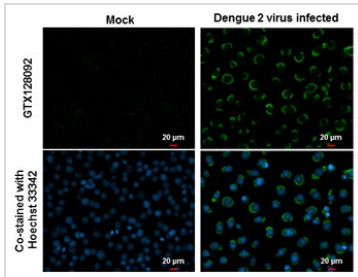


For full product information, images and publications, please visit our [website](#).

For laboratory research use only. Not for any clinical, therapeutic, or diagnostic use in humans or animals. Not for animal or human consumption.

Note

Purchasers shall not, and agree not to enable third parties to, analyze, copy, reverse engineer or otherwise attempt to determine the structure or sequence of the product.

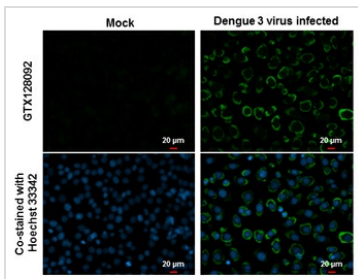
DATA IMAGES

GTx128092 ICC/IF Image

prM (Dengue virus) antibody detects prM (Dengue virus) protein at cytoplasm by immunofluorescent analysis.

Samples: BHK-21 cells mock (left) and infected with Dengue virus 2 (right) were fixed in MeOH.

Green: prM (Dengue virus) protein stained by prM (Dengue virus) antibody (GTx128092) diluted at 1:2000.

Blue: Hoechst 33342 staining.

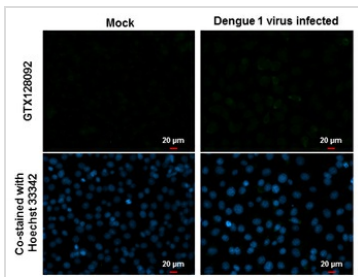

GTx128092 ICC/IF Image

prM (Dengue virus) antibody detects prM (Dengue virus) protein at cytoplasm by immunofluorescent analysis.

Samples: BHK-21 cells mock (left) and infected with Dengue virus 3 (right) were fixed in MeOH.

Green: prM (Dengue virus) protein stained by prM (Dengue virus) antibody (GTx128092) diluted at 1:2000.

Blue: Hoechst 33342 staining.

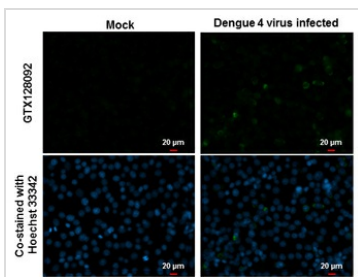

GTx128092 ICC/IF Image

prM (Dengue virus) antibody detects prM (Dengue virus) protein at cytoplasm by immunofluorescent analysis.

Samples: BHK-21 cells mock (left) and infected with Dengue virus 1 (right) were fixed in MeOH.

Green: prM (Dengue virus) protein stained by prM (Dengue virus) antibody (GTx128092) diluted at 1:2000.

Blue: Hoechst 33342 staining.


GTx128092 ICC/IF Image

prM (Dengue virus) antibody detects prM (Dengue virus) protein at cytoplasm by immunofluorescent analysis.

Samples: BHK-21 cells mock (left) and infected with Dengue virus 4 (right) were fixed in MeOH.

Green: prM (Dengue virus) protein stained by prM (Dengue virus) antibody (GTx128092) diluted at 1:2000.

Blue: Hoechst 33342 staining.



For full product information, images and publications, please visit our [website](#).