

Dengue virus prM protein antibody

Cat. No. GTX128093

Host	Rabbit
Clonality	Polyclonal
Isotype	IgG
Applications	WB, ICC/IF
Reactivity	Dengue virus 2

References (15)

     Review (1)

Package

100 µl, 25 µl

Applications

Application Note

*Optimal dilutions/concentrations should be determined by the researcher.

Suggested dilution	Recommended dilution
WB	1:1000-1:10000
ICC/IF	1:100-1:2000

Not tested in other applications.

Calculated MW 22 kDa. ([Note](#))

Product Note

This antibody was raised against Dengue virus 2 prM protein, which may cross react with prM protein of Dengue virus 1/3/4 but does not recognize with prM protein of JEV.

Properties

Form	Liquid
Buffer	PBS, 20% Glycerol
Preservative	0.01% Thimerosal
Storage	Store as concentrated solution. Centrifuge briefly prior to opening vial. For short-term storage (1-2 weeks), store at 4°C. For long-term storage, aliquot and store at -20°C or below. Avoid multiple freeze-thaw cycles.
Concentration	1 mg/ml (Please refer to the vial label for the specific concentration.)
Immunogen	Recombinant protein encompassing a sequence within the center region of Dengue virus PrM protein (Dengue virus 2 (strain 16681 PDK 53)). The exact sequence is proprietary.
Purification	Purified by antigen-affinity chromatography.
Conjugation	Unconjugated



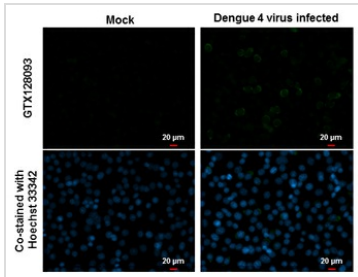
For full product information, images and publications, please visit our [website](#).

Date 2025 / 09 / 03 Page 1 of 2

For laboratory research use only. Not for any clinical, therapeutic, or diagnostic use in humans or animals. Not for animal or human consumption.

Note

Purchasers shall not, and agree not to enable third parties to, analyze, copy, reverse engineer or otherwise attempt to determine the structure or sequence of the product.

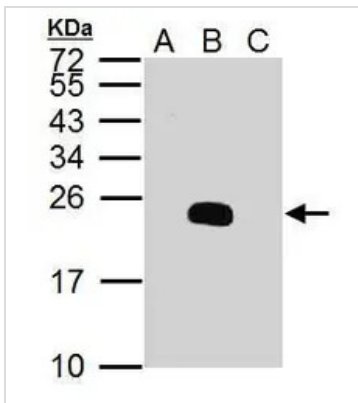
DATA IMAGES

GTx128093 ICC/IF Image

prM (Dengue virus) antibody detects prM (Dengue virus) protein at cytoplasm by immunofluorescent analysis.

Samples: BHK-21 cells mock (left) and infected with Dengue virus 4 (right) were fixed in MeOH.

Green: prM (Dengue virus) protein stained by prM (Dengue virus) antibody (GTx128093) diluted at 1:2000.

Blue: Hoechst 33342 staining.


GTx128093 WB Image

prM (Dengue virus 2) antibody detects prM (Dengue virus 2) protein by western blot analysis.

A. 30 μg BHK-21 whole cell lysate/extract

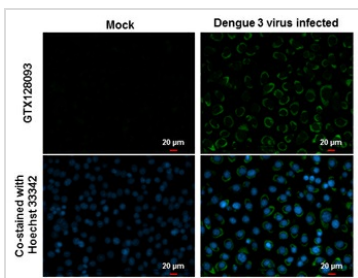
B. 30 μg whole cell lysate/extract of Dengue virus 2 infected BHK-21 cells

C. 30 μg whole cell lysate/extract of JEV virus infected BHK-21 cells

15% SDS-PAGE

prM (Dengue virus 2) antibody (GTx128093) dilution: 1:5000

The HRP-conjugated anti-rabbit IgG antibody (GTx213110-01) was used to detect the primary antibody.

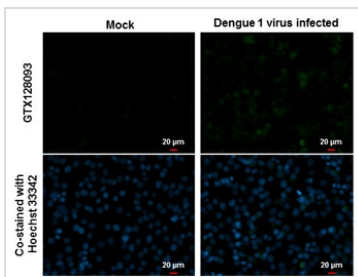

GTx128093 ICC/IF Image

prM (Dengue virus) antibody detects prM (Dengue virus) protein at cytoplasm by immunofluorescent analysis.

Samples: BHK-21 cells mock (left) and infected with Dengue virus 3 (right) were fixed in MeOH.

Green: prM (Dengue virus) protein stained by prM (Dengue virus) antibody (GTx128093) diluted at 1:2000.

Blue: Hoechst 33342 staining.


GTx128093 ICC/IF Image

prM (Dengue virus) antibody detects PrM (Dengue virus) protein at cytoplasm by immunofluorescent analysis.

Samples: BHK-21 cells mock (left) and infected with Dengue virus 1 (right) were fixed in MeOH.

Green: prM (Dengue virus) protein stained by prM (Dengue virus) antibody (GTx128093) diluted at 1:2000.

Blue: Hoechst 33342 staining.



For full product information, images and publications, please visit our [website](http://www.genetex.com).