

Histone H3S10ph (phospho Ser10) antibody

Cat. No. GTX128116

Host	Rabbit
Clonality	Polyclonal
Isotype	IgG
Applications	WB, ICC/IF, IHC-P, IHC-Wm, IP, ChIP assay
Reactivity	Human, Mouse, Rat, Zebrafish, Bovine

References (11)

Package

100 µl, 25 µl

Applications

Application Note

*Optimal dilutions/concentrations should be determined by the researcher.

Suggested dilution	Recommended dilution
WB	1:500-1:3000
ICC/IF	1:100-1:1000
IHC-P	1:100-1:1000
IHC-Wm	1:100-1:500
IP	1:100-1:500
ChIP assay	Assay dependent

Not tested in other applications.

Properties

Form	Liquid
Buffer	PBS, 1% BSA, 20% Glycerol
Preservative	0.025% ProClin 300
Storage	Store as concentrated solution. Centrifuge briefly prior to opening vial. For short-term storage (1-2 weeks), store at 4°C. For long-term storage, aliquot and store at -20°C or below. Avoid multiple freeze-thaw cycles.
Concentration	0.19 mg/ml (Please refer to the vial label for the specific concentration.)
Immunogen	Carrier-protein conjugated synthetic peptide surrounding phospho Ser10 of human Histone H3. The exact sequence is proprietary.
Purification	Purified by antigen-affinity chromatography.
Conjugation	Unconjugated

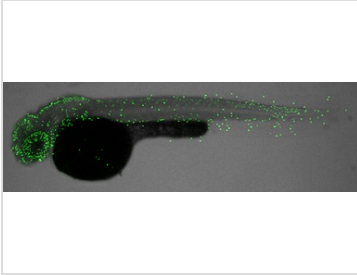


For full product information, images and publications, please visit our [website](#).

For laboratory research use only. Not for any clinical, therapeutic, or diagnostic use in humans or animals. Not for animal or human consumption.

Note

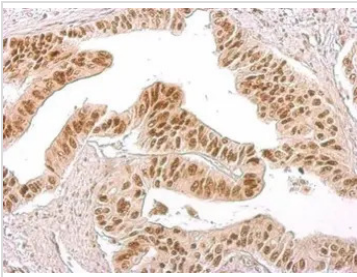
Purchasers shall not, and agree not to enable third parties to, analyze, copy, reverse engineer or otherwise attempt to determine the structure or sequence of the product.

DATA IMAGES

GTx128116 IHC-Wm Image

Histone H3S10ph (phospho Ser10) antibody detects Histone H3S10ph (phospho Ser10) protein on zebrafish by whole mount immunohistochemical analysis.

Sample: Paraformaldehyde-fixed 2 day-post-fertilization zebrafish embryo.

Histone H3S10ph (phospho Ser10) (GTx128116) antibody dilution: 1:100.

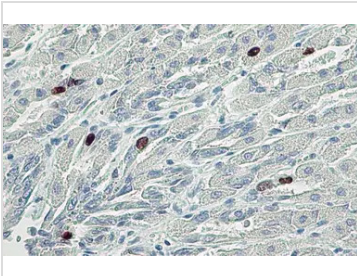

GTx128116 IHC-P Image

Histone H3 (phospho Ser10) antibody detects HIST1H3A protein at nucleus on human gastric cancer by immunohistochemical analysis.

Sample: Paraffin-embedded gastric cancer.

Histone H3 (phospho Ser10) antibody (GTx128116) dilution: 1:500.

Antigen Retrieval: Trilogy™ (EDTA based, pH 8.0) buffer, 15min


GTx128116 IHC-P Image

Histone H3S10ph (phospho Ser10) antibody detects Histone H3S10ph (phospho Ser10) protein at nucleus by immunohistochemical analysis.

Sample: Paraffin-embedded mouse stomach.

Histone H3S10ph (phospho Ser10) stained by Histone H3S10ph (phospho Ser10) antibody (GTx128116) diluted at 1:500.

Antigen Retrieval: Citrate buffer, pH 6.0, 15 min



For full product information, images and publications, please visit our [website](#).