

Porcine circovirus type 2 / PCV2 Capsid antibody

Cat. No. GTX128120

Host	Rabbit
Clonality	Polyclonal
Isotype	IgG
Applications	WB, IHC-P, IHC
Reactivity	Porcine circovirus type 2

References (4)

Package

100 µl, 25 µl

Applications

Application Note

*Optimal dilutions/concentrations should be determined by the researcher.

Suggested dilution	Recommended dilution
WB	1:500-1:3000
IHC-P	1:100-1:1000
IHC	Assay dependent

Not tested in other applications.

Calculated MW 28 kDa. ([Note](#))

Properties

Form	Liquid
Buffer	PBS, 1% BSA, 20% Glycerol
Preservative	0.025% ProClin 300
Storage	Store as concentrated solution. Centrifuge briefly prior to opening vial. For short-term storage (1-2 weeks), store at 4°C. For long-term storage, aliquot and store at -20°C or below. Avoid multiple freeze-thaw cycles.
Concentration	0.05 mg/ml (Please refer to the vial label for the specific concentration.)
Immunogen	Recombinant fragment of Porcine circovirus type 2 Capsid protein. (Strain: swPCV2bps1)
Purification	Purified by antigen-affinity chromatography.
Conjugation	Unconjugated

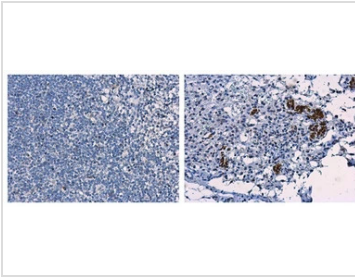
Note

For laboratory research use only. Not for any clinical, therapeutic, or diagnostic use in humans or animals. Not for animal or human consumption.

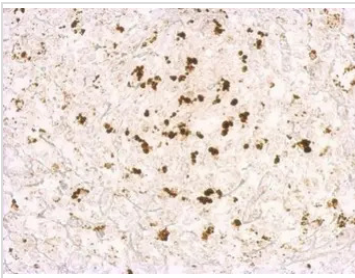
Purchasers shall not, and agree not to enable third parties to, analyze, copy, reverse engineer or otherwise attempt to determine the structure or sequence of the product.



For full product information, images and publications, please visit our [website](#).

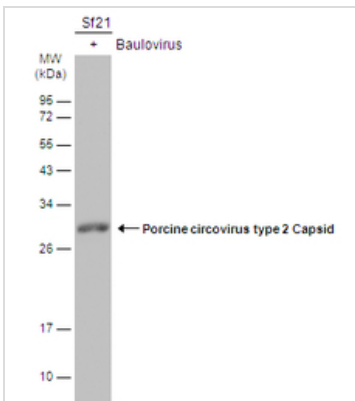
DATA IMAGES

GTX128120 IHC-P Image

Porcine circovirus type 2 Capsid antibody detects PCV2 on lymph node by immunohistochemical analysis.
 Sample: Paraffin-embedded PCV2 free (left) and infected (right) swine lymph node. Porcine circovirus type 2 Capsid antibody (GTX128120) dilution: 1:500.
 Antigen Retrieval: Citrate buffer, pH 6.0, 15 min

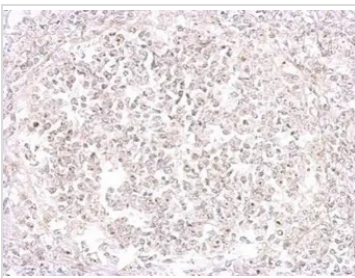

GTX128120 IHC-P Image

Porcine circovirus type 2 Capsid antibody detects PCV2 at macrophages on lymph node by immunohistochemical analysis.
 Sample: Paraffin-embedded PCV2 infected swine lymph node.
 Porcine circovirus type 2 Capsid antibody (GTX128120) dilution: 1:1000.

Antigen Retrieval: Trilogy™ (EDTA based, pH 8.0) buffer, 15min


GTX128120 WB Image

Lysate (30 µg) from Sf21 cells, expressing recombinant PCV2 protein by baculovirus system, was separated by 12% SDS-PAGE, and the membrane was blotted with Porcine circovirus type 2 Capsid antibody (GTX128120) diluted at 1:1000. The HRP-conjugated anti-rabbit IgG antibody (GTX213110-01) was used to detect the primary antibody. (The lysate was provided courtesy of Dr. Wu lab at Chung Yuan Christian University, Department of Bioscience Technology.)
 Infected Sf21 whole cell extract provided from Dr. Wu lab, Chung Yuan Christian University, Bioscience Technology.


GTX128120 IHC-P Image

Porcine circovirus type 2 Capsid antibody didn't detects PCV2 at macrophages on lymph node by immunohistochemical analysis.
 Sample: Paraffin-embedded PCV2 free swine lymph node.
 Porcine circovirus type 2 Capsid antibody (GTX128120) dilution: 1:1000.

Antigen Retrieval: Trilogy™ (EDTA based, pH 8.0) buffer, 15min



For full product information, images and publications, please visit our [website](http://www.genetex.com).