

## Fgf8a antibody

**Cat. No. GTX128126**

<b>Host</b>	Rabbit
<b>Clonality</b>	Polyclonal
<b>Isotype</b>	IgG
<b>Applications</b>	IHC-Fr, IHC-Wm
<b>Reactivity</b>	Zebrafish

References ( 2 )

Package

100 µl, 25 µl

## Applications

**Application Note**

\*Optimal dilutions/concentrations should be determined by the researcher.

Suggested dilution	Recommended dilution
IHC-Fr	Assay dependent
IHC-Wm	1:100-1:500

Not tested in other applications.

## Properties

<b>Form</b>	Liquid
<b>Buffer</b>	PBS, 20% Glycerol
<b>Preservative</b>	0.025% ProClin 300
<b>Storage</b>	Store as concentrated solution. Centrifuge briefly prior to opening vial. For short-term storage (1-2 weeks), store at 4°C. For long-term storage, aliquot and store at -20°C or below. Avoid multiple freeze-thaw cycles.
<b>Concentration</b>	1.01 mg/ml (Please refer to the vial label for the specific concentration.)
<b>Immunogen</b>	Recombinant protein encompassing a sequence within the center region of zebrafish Fgf8a. The exact sequence is proprietary.
<b>Purification</b>	Purified by antigen-affinity chromatography.
<b>Conjugation</b>	Unconjugated

**Note**

For laboratory research use only. Not for any clinical, therapeutic, or diagnostic use in humans or animals. Not for animal or human consumption.

Purchasers shall not, and agree not to enable third parties to, analyze, copy, reverse engineer or otherwise attempt to determine the structure or sequence of the product.

For full product information, images and publications, please visit our [website](#).

DATA IMAGES

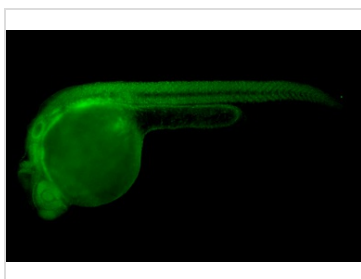


**GTX128126 IHC-Wm Image**

fgf8a antibody detects fgf8a protein on whole-mount zebrafish embryos by immunohistochemical analysis.

Sample: Paraformaldehyde-fixed zebrafish embryos.

fgf8a antibody (GTX128126) dilution: 1:200.



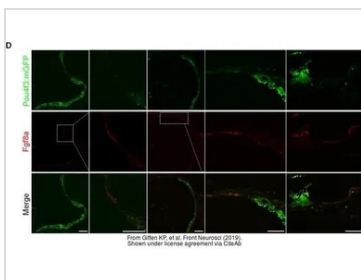
**GTX128126 IHC-Wm Image**

Fgf8a antibody detects Fgf8a protein on whole mount zebrafish by immunohistochemical analysis.

Sample: Paraformaldehyde-fixed 1 day-post-fertilization zebrafish embryo.

Green: Fgf8a stained by Fgf8a antibody (GTX128126) diluted at 1:100.

Antigen Retrieval: Tris-EDTA buffer, pH 9.0, 15 min



**GTX128126 IHC-Fr Image**

The data was published in the journal Front Neurosci in 2019. [PMID: 31680844](https://pubmed.ncbi.nlm.nih.gov/31680844/)



For full product information, images and publications, please visit our [website](https://www.genetex.com).