

## Pax2a antibody

Cat. No. GTX128127

Host	Rabbit
Clonality	Polyclonal
Isotype	IgG
Applications	WB, IHC-Wm
Reactivity	Zebrafish, Japanese Medaka

References ( 15 )

Package

100 µl, 25 µl

## Applications

## Application Note

\*Optimal dilutions/concentrations should be determined by the researcher.

Suggested dilution	Recommended dilution
WB	1:500-1:3000
IHC-Wm	1:100-1:500

Not tested in other applications.

Calculated MW 44 kDa. ( [Note](#) )

## Properties

Form	Liquid
Buffer	PBS, 20% Glycerol
Preservative	0.025% ProClin 300
Storage	Store as concentrated solution. Centrifuge briefly prior to opening vial. For short-term storage (1-2 weeks), store at 4°C. For long-term storage, aliquot and store at -20°C or below. Avoid multiple freeze-thaw cycles.
Concentration	1.21 mg/ml (Please refer to the vial label for the specific concentration.)
Immunogen	Recombinant protein encompassing a sequence within the center region of zebrafish Pax2a. The exact sequence is proprietary.
Purification	Purified by antigen-affinity chromatography.
Conjugation	Unconjugated

## Note

For laboratory research use only. Not for any clinical, therapeutic, or diagnostic use in humans or animals. Not for animal or human consumption.

Purchasers shall not, and agree not to enable third parties to, analyze, copy, reverse engineer or otherwise attempt to determine the structure or sequence of the product.



For full product information, images and publications, please visit our [website](#).

**DATA IMAGES**

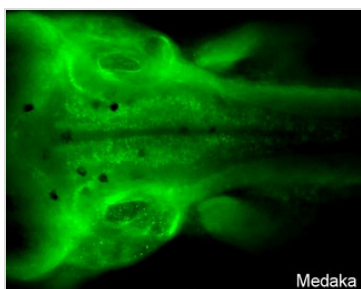
**GTx128127 IHC-Wm Image**

Pax2a antibody and Tubulin (Acetyl Lys40) antibody label central nervous system on zebrafish by whole mount immunohistochemical analysis.

Sample: 2 days-post-fertilization zebrafish embryo.

Green: Pax2a antibody (GTx128127) dilution: 1:200.

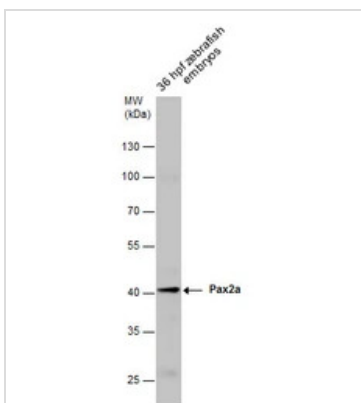
Red: Tubulin (Acetyl Lys40) antibody [6-11B-1] (GTx16292) dilution: 1:50.


**GTx128127 IHC-Wm Image**

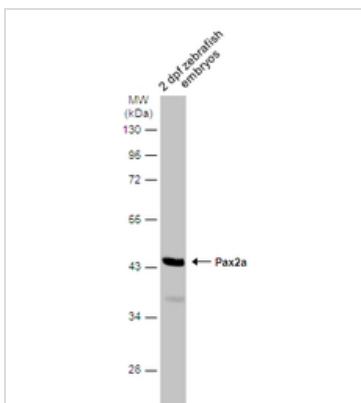
Pax2a antibody detects Pax2a protein on Medaka by whole mount immunohistochemical analysis.

Sample: 7 days-post-fertilization medaka embryo.

Pax2a antibody (GTx128127) dilution: 1:100.


**GTx128127 WB Image**

Zebrafish tissue extract (30 µg) was separated by 10% SDS-PAGE, and the membrane was blotted with Pax2a antibody (GTx128127) diluted at 1:1000.


**GTx128127 WB Image**

Zebrafish embryos extracts (30 µg) was separated by 10% SDS-PAGE, and the membrane was blotted with Pax2a antibody (GTx128127) diluted at 1:1000. The HRP-conjugated anti-rabbit IgG antibody (GTx213110-01) was used to detect the primary antibody.



For full product information, images and publications, please visit our [website](http://www.genetex.com).