

ATR (phospho Thr1989) antibody

Cat. No. GTX128145

Host	Rabbit
Clonality	Polyclonal
Isotype	IgG
Application	WB, ICC/IF, IHC-P, IP
Reactivity	Human, Mouse

Reference (86)

★★★★★ Review (1)

Package

100 µl, 25 µl

APPLICATION

Application Note

*Optimal dilutions/concentrations should be determined by the researcher.

Suggested dilution	Recommended dilution
WB	1:500-1:3000
ICC/IF	1:100-1:1000
IHC-P	1:100-1:1000
IP	1:100-1:500

Not tested in other applications.

Calculated MW 301 kDa. ([Note](#))

PROPERTIES

Form	Liquid
Buffer	PBS, 1% BSA, 20% Glycerol
Preservative	0.025% ProClin 300
Storage	Store as concentrated solution. Centrifuge briefly prior to opening vial. For short-term storage (1-2 weeks), store at 4°C. For long-term storage, aliquot and store at -20°C or below. Avoid multiple freeze-thaw cycles.
Concentration	0.09 mg/ml (Please refer to the vial label for the specific concentration.)
Immunogen	Carrier-protein conjugated synthetic peptide surrounding phospho Thr1989 of human ATR. The exact sequence is proprietary.
Purification	Purified by antigen-affinity chromatography.
Conjugation	Unconjugated

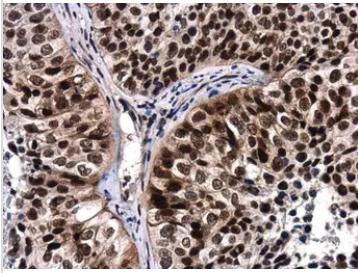


For full product information, images and publications, please visit our [website](#).

For laboratory research use only. Not for any clinical, therapeutic, or diagnostic use in humans or animals. Not for animal or human consumption.

Note

Purchasers shall not, and agree not to enable third parties to, analyze, copy, reverse engineer or otherwise attempt to determine the structure or sequence of the product.

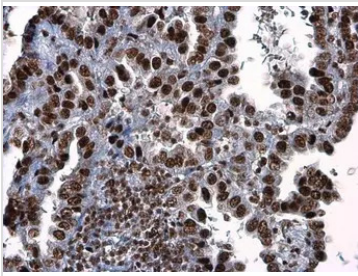
DATA IMAGES

GTx128145 IHC-P Image

ATR (phospho Thr1989) antibody detects ATR (phospho Thr1989) protein at nucleus in human lung by immunohistochemical analysis.

Sample: Paraffin-embedded human lung.

ATR (phospho Thr1989) antibody (GTx128145) diluted at 1:250.

Antigen Retrieval: Citrate buffer, pH 6.0, 15 min

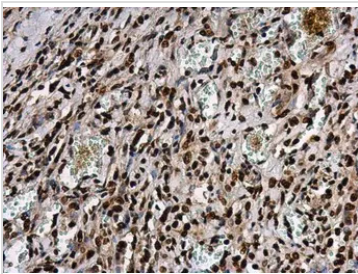

GTx128145 IHC-P Image

ATR (phospho Thr1989) antibody detects ATR (phospho Thr1989) protein at nucleus in human colon cancer by immunohistochemical analysis.

Sample: Paraffin-embedded human colon cancer.

ATR (phospho Thr1989) antibody (GTx128145) diluted at 1:250.

Antigen Retrieval: Citrate buffer, pH 6.0, 15 min

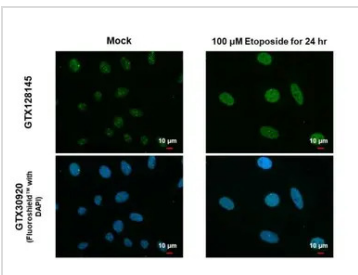

GTx128145 IHC-P Image

ATR (phospho Thr1989) antibody detects ATR protein at nucleus in human lung cancer by immunohistochemical analysis.

Sample: Paraffin-embedded human lung cancer.

ATR (phospho Thr1989) antibody (GTx128145) diluted at 1:250.

Antigen Retrieval: Citrate buffer, pH 6.0, 15 min


GTx128145 ICC/IF Image

ATR (phospho Thr1989) antibody detects ATR (phospho Thr1989) protein at nucleus by immunofluorescent analysis.

Sample: Mock and treated HeLa cells were fixed in 4% paraformaldehyde at RT for 15 min.

Green: ATR (phospho Thr1989) stained by ATR (phospho Thr1989) antibody (GTx128145) diluted at 1:500.

Blue: Fluoroshield with DAPI (GTx30920).



For full product information, images and publications, please visit our [website](https://www.genetex.com).