

SQSTM1 / P62 (phospho Ser403) antibody

Cat. No. GTX128171

Host	Rabbit
Clonality	Polyclonal
Isotype	IgG
Applications	WB, ICC/IF, IHC-P, FCM, IHC
Reactivity	Human, Mouse, Rat

References (23)

★★★★★ Review (2)

Package

100 µl, 25 µl

Applications

Application Note

*Optimal dilutions/concentrations should be determined by the researcher.

Suggested dilution	Recommended dilution
WB	1:500-1:3000
ICC/IF	1:100-1:1000
IHC-P	1:100-1:1000
FCM	1:50-1:200
IHC	Assay dependent

Not tested in other applications.

Calculated MW 48 kDa. ([Note](#))

Properties

Form	Liquid
Buffer	PBS, 1% BSA, 20% Glycerol
Preservative	0.025% ProClin 300
Storage	Store as concentrated solution. Centrifuge briefly prior to opening vial. For short-term storage (1-2 weeks), store at 4°C. For long-term storage, aliquot and store at -20°C or below. Avoid multiple freeze-thaw cycles.
Concentration	0.08 mg/ml (Please refer to the vial label for the specific concentration.)
Immunogen	Carrier-protein conjugated synthetic peptide surrounding phospho Ser403 of human SQSTM1 / P62. The exact sequence is proprietary.
Purification	Purified by antigen-affinity chromatography.
Conjugation	Unconjugated

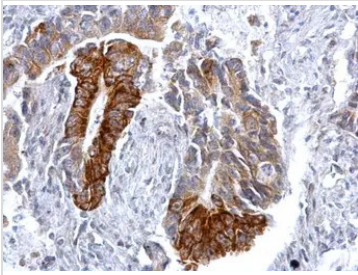
For full product information, images and publications, please visit our [website](#).

For laboratory research use only. Not for any clinical, therapeutic, or diagnostic use in humans or animals. Not for animal or human consumption.

Note

Purchasers shall not, and agree not to enable third parties to, analyze, copy, reverse engineer or otherwise attempt to determine the structure or sequence of the product.

DATA IMAGES



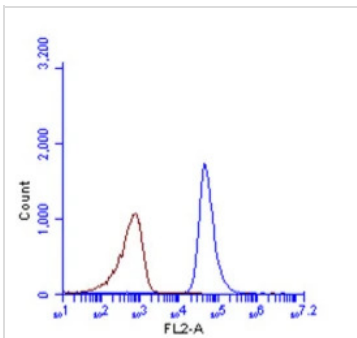
GTx128171 IHC-P Image

SQSTM1 (phospho Ser403) antibody detects SQSTM1 (phospho Ser403) protein at cytosol on human colon carcinoma by immunohistochemical analysis.

Sample: Paraffin-embedded human colon carcinoma.

SQSTM1 (phospho Ser403) antibody (GTx128171) dilution: 1:500.

Antigen Retrieval: Trilogy™ (EDTA based, pH 8.0) buffer, 15min



GTx128171 FCM Image

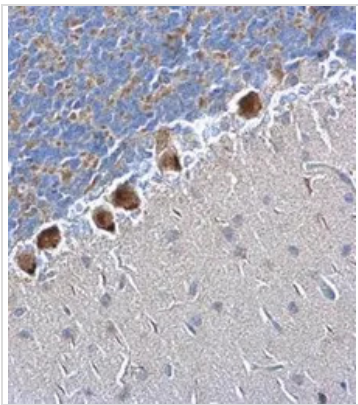
SQSTM1 (phospho Ser403) antibody (GTx128171) detects SQSTM1 (phospho Ser403) protein by flow cytometry analysis.

Sample: HeLa cell fixed in 4% paraformaldehyde at 4oC for 5 min.

Brown: Unlabelled sample was also used as a control.

Blue: SQSTM1 (phospho Ser403) antibody (GTx128171) dilution: 1:100.

Acquisition of >20,000 events were collected using Argon ion laser (488nm) and 525/30 bandpass filter.



GTx128171 IHC-P Image

SQSTM1 (phospho Ser403) antibody detects SQSTM1 (phospho Ser403) protein at nucleus on rat hind brain by immunohistochemical analysis.

Sample: Paraffin-embedded rat hind brain.

SQSTM1 (phospho Ser403) antibody (GTx128171) dilution: 1:500.

Antigen Retrieval: Trilogy™ (EDTA based, pH 8.0) buffer, 15min



For full product information, images and publications, please visit our [website](https://www.genetex.com).