

## GPR22 antibody

Cat. No. GTX12818

Host	Rabbit
Clonality	Polyclonal
Isotype	IgG
Application	IHC-P
Reactivity	Human, Zebrafish, Hamster, Chicken, Monkey, Bat, Horse, Xenopus

## Package

25 µg

## APPLICATION

## Application Note

\*Optimal dilutions/concentrations should be determined by the researcher.

Suggested dilution	Recommended dilution
IHC-P	4 µg/ml

Not tested in other applications.

Calculated MW 49 kDa. ( [Note](#) )

## PROPERTIES

Form	Liquid
Buffer	PBS
Preservative	0.1% Sodium azide
Storage	Store as concentrated solution. Centrifuge briefly prior to opening vial. For short-term storage (1-2 weeks), store at 4°C. For long-term storage, aliquot and store at -20°C or below. Avoid multiple freeze-thaw cycles.
Concentration	1 mg/ml (Please refer to the vial label for the specific concentration.)
Immunogen	Synthetic 20 amino acid peptide from 3rd cytoplasmic domain of human GPR22.
Purification	Purified by affinity chromatography
Conjugation	Unconjugated

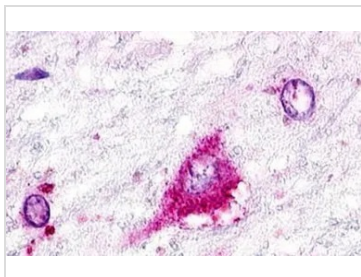
## Note

For laboratory research use only. Not for any clinical, therapeutic, or diagnostic use in humans or animals. Not for animal or human consumption.

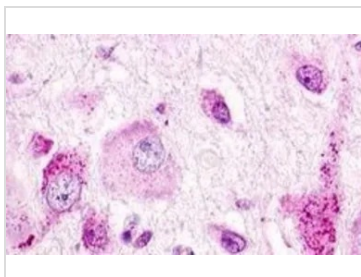
Purchasers shall not, and agree not to enable third parties to, analyze, copy, reverse engineer or otherwise attempt to determine the structure or sequence of the product.



For full product information, images and publications, please visit our [website](#).

**DATA IMAGES**

**GTX12818 IHC-P Image**

IHC-P analysis of human brain, neurons and glia tissue using GTX12818 GPR22 antibody.  
Antigen retrieval : Heat-induced antigen retrieval


**GTX12818 IHC-P Image**

IHC-P analysis of brain, hypothalamus tissue using GTX12818 GPR22 antibody.



For full product information, images and publications, please visit our [website](#).