

# Isl1 antibody

**Cat. No. GTX128201**

<b>Host</b>	Rabbit
<b>Clonality</b>	Polyclonal
<b>Isotype</b>	IgG
<b>Applications</b>	WB, IHC-Wm
<b>Reactivity</b>	Zebrafish

[References \( 6 \)](#)

[Package](#)

100 µl, 25 µl

## Applications

### Application Note

\*Optimal dilutions/concentrations should be determined by the researcher.

Suggested dilution	Recommended dilution
WB	Assay dependent
IHC-Wm	1:100-1:500

Not tested in other applications.

**Calculated MW** 39 kDa. ( [Note](#) )

## Properties

<b>Form</b>	Liquid
<b>Buffer</b>	PBS, 20% Glycerol
<b>Preservative</b>	0.025% ProClin 300
<b>Storage</b>	Store as concentrated solution. Centrifuge briefly prior to opening vial. For short-term storage (1-2 weeks), store at 4°C. For long-term storage, aliquot and store at -20°C or below. Avoid multiple freeze-thaw cycles.
<b>Concentration</b>	0.55 mg/ml (Please refer to the vial label for the specific concentration.)
<b>Immunogen</b>	The immunogen used to generate this antibody corresponds to zebrafish Isl1
<b>Purification</b>	Purified by antigen-affinity chromatography.
<b>Conjugation</b>	Unconjugated

### Note

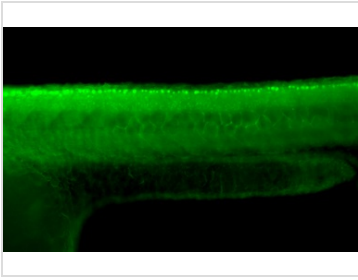
For laboratory research use only. Not for any clinical, therapeutic, or diagnostic use in humans or animals. Not for animal or human consumption.

Purchasers shall not, and agree not to enable third parties to, analyze, copy, reverse engineer or otherwise attempt to determine the structure or sequence of the product.



For full product information, images and publications, please visit our [website](#).

DATA IMAGES

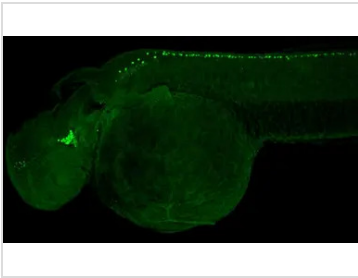


**GTX128201 IHC-Wm Image**

Isl1 antibody detects Isl1 protein on zebrafish by whole mount immunohistochemical analysis.

Sample: 2 days-post-fertilization zebrafish embryo.

Isl1 antibody (GTX128201) dilution: 1:50.



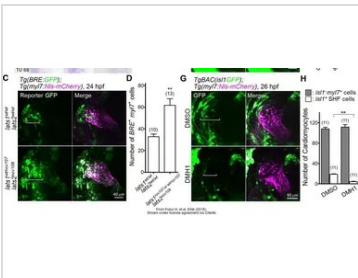
**GTX128201 IHC-Wm Image**

Isl1 antibody detects Isl1 protein on whole mount zebrafish by immunohistochemical analysis.

Sample: Paraformaldehyde-fixed 2 days-post-fertilization zebrafish embryo.

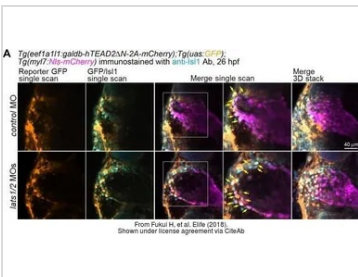
Green: Isl1 stained by Isl1 antibody (GTX128201) diluted at 1:100.

Antigen Retrieval: Tris-HCl buffer, pH 9.0, 20 min at 70°C



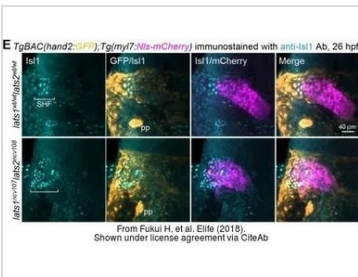
**GTX128201 IHC-Wm Image**

The data was published in the journal Elife in 2018.[PMID: 29809141](https://doi.org/10.7554/eLife.29809)



**GTX128201 IHC-Wm Image**

The data was published in the journal Elife in 2018.[PMID: 29809141](https://doi.org/10.7554/eLife.29809)



**GTX128201 IHC-Wm Image**

The data was published in the journal Elife in 2018.[PMID: 29809141](https://doi.org/10.7554/eLife.29809)



For full product information, images and publications, please visit our [website](https://www.genetex.com).