

PU.1/Spi1 antibody

Cat. No. GTX128266

Host	Rabbit
Clonality	Polyclonal
Isotype	IgG
Applications	WB, IHC-Wm
Reactivity	Zebrafish

References (3)

Package

100 µl, 25 µl

Applications

Application Note

*Optimal dilutions/concentrations should be determined by the researcher.

Suggested dilution	Recommended dilution
WB	Assay dependent
IHC-Wm	1:100-1:500

Not tested in other applications.

Properties

Form	Liquid
Buffer	PBS, 20% Glycerol
Preservative	0.01% Thimerosal
Storage	Store as concentrated solution. Centrifuge briefly prior to opening vial. For short-term storage (1-2 weeks), store at 4°C. For long-term storage, aliquot and store at -20°C or below. Avoid multiple freeze-thaw cycles.
Concentration	1 mg/ml (Please refer to the vial label for the specific concentration.)
Immunogen	Recombinant protein encompassing a sequence within the center region of zebrafish PU.1/Spi1. The exact sequence is proprietary.
Purification	Purified by antigen-affinity chromatography.
Conjugation	Unconjugated

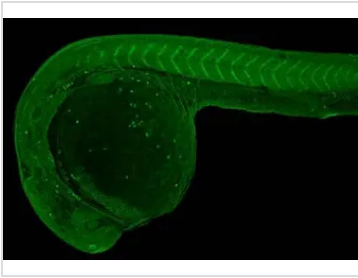
Note

For laboratory research use only. Not for any clinical, therapeutic, or diagnostic use in humans or animals. Not for animal or human consumption.

Purchasers shall not, and agree not to enable third parties to, analyze, copy, reverse engineer or otherwise attempt to determine the structure or sequence of the product.



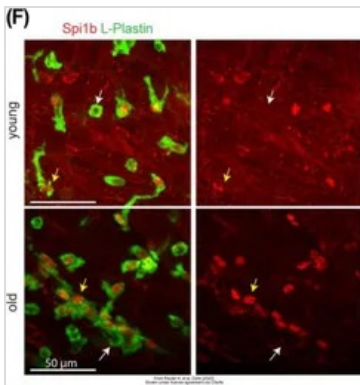
For full product information, images and publications, please visit our [website](#).

DATA IMAGES

GTx128266 IHC-Wm Image

PU.1/Spi1 antibody detects PU.1/Spi1 protein on whole-mount zebrafish embryos by immunohistochemical analysis.

Sample: Paraformaldehyde-fixed zebrafish embryos.

PU.1/Spi1 antibody (GTx128266) dilution: 1:200.


GTx128266 IHC-Wm Image

The data was published in the 2022 in Cells. [PMID: 35159152](https://pubmed.ncbi.nlm.nih.gov/35159152/)



For full product information, images and publications, please visit our [website](https://www.genetex.com).