

Foxa2 antibody

Cat. No. GTX128273

Host	Rabbit
Clonality	Polyclonal
Isotype	IgG
Applications	WB, IHC-Wm
Reactivity	Zebrafish

Package
100 µl, 25 µl

Applications

Application Note

*Optimal dilutions/concentrations should be determined by the researcher.

Suggested dilution	Recommended dilution
WB	1:500-1:3000
IHC-Wm	1:50-1:500

Not tested in other applications.

Calculated MW 45 kDa. ([Note](#))

Properties

Form	Liquid
Buffer	PBS, 20% Glycerol
Preservative	0.01% Thimerosal
Storage	Store as concentrated solution. Centrifuge briefly prior to opening vial. For short-term storage (1-2 weeks), store at 4°C. For long-term storage, aliquot and store at -20°C or below. Avoid multiple freeze-thaw cycles.
Concentration	1 mg/ml (Please refer to the vial label for the specific concentration.)
Immunogen	Recombinant protein encompassing a sequence within the center region of zebrafish Foxa2. The exact sequence is proprietary.
Purification	Purified by antigen-affinity chromatography.
Conjugation	Unconjugated

Note

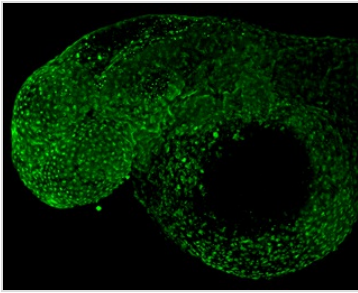
For laboratory research use only. Not for any clinical, therapeutic, or diagnostic use in humans or animals. Not for animal or human consumption.

Purchasers shall not, and agree not to enable third parties to, analyze, copy, reverse engineer or otherwise attempt to determine the structure or sequence of the product.



For full product information, images and publications, please visit our [website](#).

DATA IMAGES

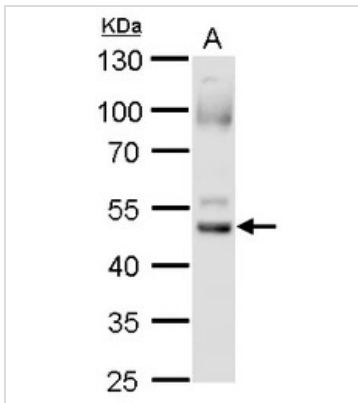


GTx128273 IHC-Wm Image

Foxa2 antibody detects Foxa2 protein on zebrafish by whole mount immunohistochemical analysis.

Sample: 2 days-post-fertilization zebrafish embryo.

Foxa2 antibody (GTx128273) dilution: 1:50.



GTx128273 WB Image

Foxa2 antibody detects foxa2 protein by western blot analysis.

A. 60 µg zebrafish 10 hpf (hours post fertilization) lysate/extract

10 % SDS-PAGE

Foxa2 antibody (GTx128273) dilution: 1:500



For full product information, images and publications, please visit our [website](#).