

## Myl7 antibody

Cat. No. GTX128346

|              |                            |
|--------------|----------------------------|
| Host         | Rabbit                     |
| Clonality    | Polyclonal                 |
| Isotype      | IgG                        |
| Applications | WB, IHC-Fr, IHC-Wm         |
| Reactivity   | Zebrafish, Japanese Medaka |

References ( 6 )

Package

100 µl, 25 µl

## Applications

## Application Note

\*Optimal dilutions/concentrations should be determined by the researcher.

| Suggested dilution | Recommended dilution |
|--------------------|----------------------|
| WB                 | 1:5000-1:50000       |
| IHC-Fr             | Assay dependent      |
| IHC-Wm             | 1:100-1:500          |

Not tested in other applications.

## Properties

|               |  |
|---------------|--|
| Form          | Liquid   |
| Buffer        | PBS, 20% Glycerol  |
| Preservative  | 0.025% ProClin 300   |
| Storage       | Store as concentrated solution. Centrifuge briefly prior to opening vial. For short-term storage (1-2 weeks), store at 4°C. For long-term storage, aliquot and store at -20°C or below. Avoid multiple freeze-thaw cycles. |
| Concentration | 1.22 mg/ml (Please refer to the vial label for the specific concentration.)  |
| Immunogen     | Recombinant protein encompassing a sequence within the center region of zebrafish myl7. The exact sequence is proprietary.   |
| Purification  | Purified by antigen-affinity chromatography.   |
| Conjugation   | Unconjugated   |

## Note

For laboratory research use only. Not for any clinical, therapeutic, or diagnostic use in humans or animals. Not for animal or human consumption.

Purchasers shall not, and agree not to enable third parties to, analyze, copy, reverse engineer or otherwise attempt to determine the structure or sequence of the product.



For full product information, images and publications, please visit our [website](#).

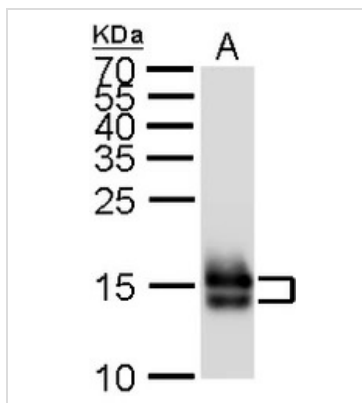
**DATA IMAGES**

**GTx128346 IHC-Wm Image**

myl7 antibody detects myl7 protein on zebrafish by whole mount immunohistochemical analysis.

Sample: 2 days-post-fertilization zebrafish embryo.

myl7 antibody (GTx128346) dilution: 1:100.

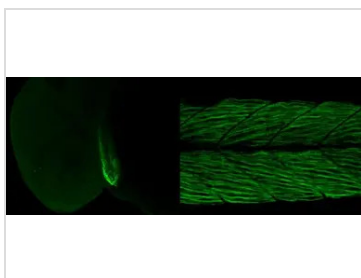

**GTx128346 WB Image**

myl7 antibody detects myl7 protein by Western blot analysis.

A. 10 µg zebrafish adult muscle lysate/extract

15 % SDS-PAGE

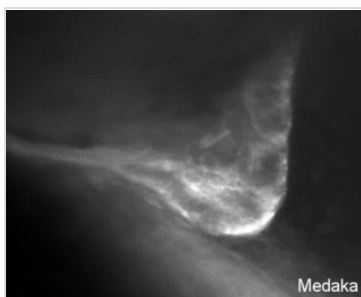
myl7 antibody (GTx128346) dilution: 1:50000


**GTx128346 IHC-Wm Image**

Myl7 antibody detects Myl7 antibody protein at cardiac and skeletal muscles on whole-mount zebrafish embryos by immunohistochemical analysis.

Sample: Paraformaldehyde-fixed zebrafish embryos.

Myl7 antibody (GTx128346) dilution: 1:200.


**GTx128346 IHC-Wm Image**

Myl7 antibody detects Myl7 protein on Medaka by whole mount immunohistochemical analysis.

Sample: 7 days-post-fertilization medaka embryo.

Myl7 antibody (GTx128346) dilution: 1:100.



For full product information, images and publications, please visit our [website](https://www.genetex.com).