

Prox1 antibody

Cat. No. GTX128354

Host	Rabbit
Clonality	Polyclonal
Isotype	IgG
Applications	IHC-P, IHC-Fr, IHC-Wm
Reactivity	Zebrafish

References (10)

Package

100 µl, 25 µl

Applications

Application Note

*Optimal dilutions/concentrations should be determined by the researcher.

Suggested dilution	Recommended dilution
IHC-P	Assay dependent
IHC-Fr	Assay dependent
IHC-Wm	1:100-1:500

Not tested in other applications.

Properties

Form	Liquid
Buffer	PBS, 20% Glycerol
Preservative	0.025% ProClin 300
Storage	Store as concentrated solution. Centrifuge briefly prior to opening vial. For short-term storage (1-2 weeks), store at 4°C. For long-term storage, aliquot and store at -20°C or below. Avoid multiple freeze-thaw cycles.
Concentration	0.95 mg/ml (Please refer to the vial label for the specific concentration.)
Immunogen	Recombinant protein encompassing a sequence within the center region of zebrafish Prox1. The exact sequence is proprietary.
Purification	Purified by antigen-affinity chromatography.
Conjugation	Unconjugated

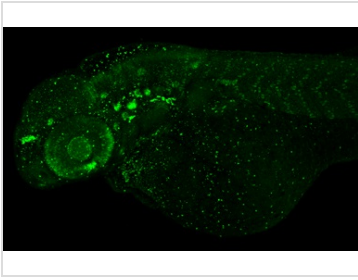
Note

For laboratory research use only. Not for any clinical, therapeutic, or diagnostic use in humans or animals. Not for animal or human consumption.

Purchasers shall not, and agree not to enable third parties to, analyze, copy, reverse engineer or otherwise attempt to determine the structure or sequence of the product.



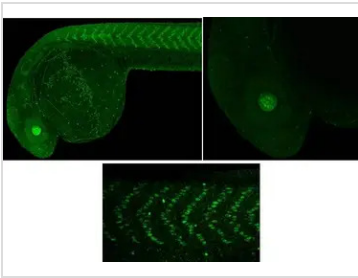
For full product information, images and publications, please visit our [website](#).

DATA IMAGES

GTX128354 IHC-Wm Image

Prox1 antibody detects Prox1 protein on zebrafish by whole mount immunohistochemical analysis.

Sample: 2 days-post-fertilization zebrafish embryo.

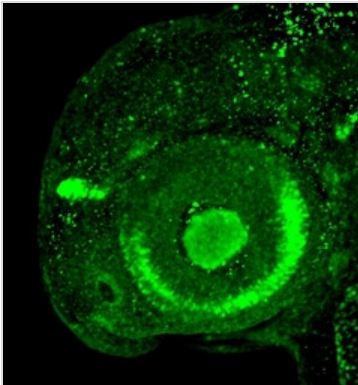
Prox1 antibody (GTX128354) dilution: 1:100.


GTX128354 IHC-Wm Image

prox1 antibody detects prox1 protein at lens and slow muscle nuclei on whole-mount zebrafish embryos by immunohistochemical analysis.

Sample: Paraformaldehyde-fixed zebrafish embryos.

prox1 antibody (GTX128354) dilution: 1:200.


GTX128354 IHC-Wm Image

Prox1 antibody detects Prox1 protein on zebrafish by whole mount immunohistochemical analysis.

Sample: 2 days-post-fertilization zebrafish embryo.

Prox1 antibody (GTX128354) dilution: 1:100.



For full product information, images and publications, please visit our [website](https://www.genetex.com).