

## AKT (phospho Ser473) antibody

**Cat. No. GTX128414**

<b>Host</b>	Rabbit
<b>Clonality</b>	Polyclonal
<b>Isotype</b>	IgG
<b>Applications</b>	WB, ICC/IF, IHC-P, IP
<b>Reactivity</b>	Human, Mouse, Rat, Pig

References ( 69 )

★★★★☆ Review ( 3 )

Package

100 µl, 25 µl

## Applications

## Application Note

\*Optimal dilutions/concentrations should be determined by the researcher.

Suggested dilution	Recommended dilution
WB	1:500-1:3000
ICC/IF	1:100-1:1000
IHC-P	Assay dependent
IP	1:100-1:500

Not tested in other applications.

**Calculated MW** 56 kDa. ( [Note](#) )**Product Note** This antibody is raised against human AKT1 phosphorylated at Ser473. Based on sequence homology, it is predicted to react with AKT2 and AKT3 when phosphorylated at the corresponding residues - AKT2 Ser474 and AKT3 Ser472.

## Properties

<b>Form</b>	Liquid
<b>Buffer</b>	PBS, 1% BSA, 20% Glycerol
<b>Preservative</b>	0.025% ProClin 300
<b>Storage</b>	Store as concentrated solution. Centrifuge briefly prior to opening vial. For short-term storage (1-2 weeks), store at 4°C. For long-term storage, aliquot and store at -20°C or below. Avoid multiple freeze-thaw cycles.
<b>Concentration</b>	1 mg/ml (Please refer to the vial label for the specific concentration.)
<b>Immunogen</b>	Carrier-protein conjugated synthetic peptide surrounding phospho Ser473 of human AKT. The exact sequence is proprietary.
<b>Purification</b>	Purified by antigen-affinity chromatography.
<b>Conjugation</b>	Unconjugated

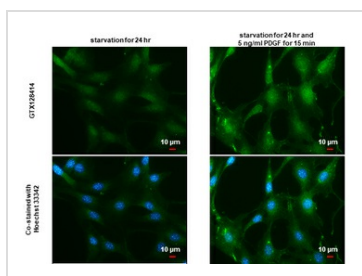
For full product information, images and publications, please visit our [website](#).

For laboratory research use only. Not for any clinical, therapeutic, or diagnostic use in humans or animals. Not for animal or human consumption.

## Note

Purchasers shall not, and agree not to enable third parties to, analyze, copy, reverse engineer or otherwise attempt to determine the structure or sequence of the product.

## DATA IMAGES



### GTx128414 ICC/IF Image

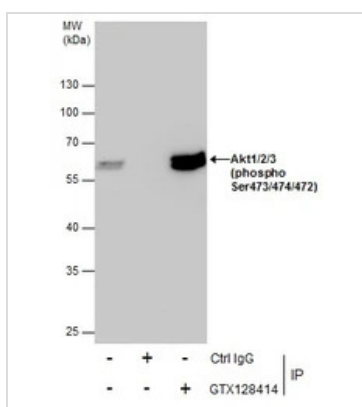
AKT (phospho Ser473) antibody detects AKT (phospho Ser473) protein by immunofluorescent analysis.

Sample: NIH3T3 cells were fixed in 4% paraformaldehyde at RT for 15 min.

Green: AKT (phospho Ser473) stained by AKT (phospho Ser473) antibody (GTx128414) diluted at 1:500.

Blue: Hoechst 33342 staining.

Scale bar = 10 μm.

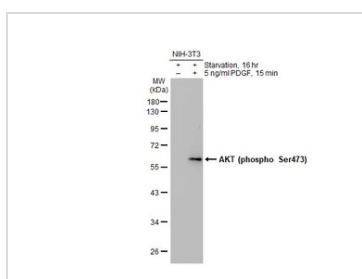


### GTx128414 IP Image

Immunoprecipitation of Akt1/2/3 (phospho Ser473/474/472) protein from 293T whole cell extracts using 5 μg of Akt1/2/3 (phospho Ser473/474/472) antibody (GTx128414).

Western blot analysis was performed using Akt1/2/3 (phospho Ser473/474/472) antibody (GTx128414).

EasyBlot anti-Rabbit IgG (GTx221666-01) was used as a secondary reagent.



### GTx128414 WB Image

Untreated (–) and treated (+) NIH-3T3 whole cell extracts (30 μg) were separated by 10% SDS-PAGE, and the membrane was blotted with AKT (phospho Ser473) antibody (GTx128414) diluted at 1:500. The HRP-conjugated anti-rabbit IgG antibody (GTx213110-01) was used to detect the primary antibody.



For full product information, images and publications, please visit our [website](https://www.genetex.com).