

AKT (phospho Ser473) antibody

Cat. No. GTX128414

| | |
|--------------|------------------------|
| Host | Rabbit |
| Clonality | Polyclonal |
| Isotype | IgG |
| Applications | WB, ICC/IF, IHC-P, IP |
| Reactivity | Human, Mouse, Rat, Pig |

References (67)

★★★★☆ Review (3)

Package

100 µl, 25 µl

Applications

Application Note

*Optimal dilutions/concentrations should be determined by the researcher.

| Suggested dilution | Recommended dilution |
|--------------------|----------------------|
| WB | 1:500-1:3000 |
| ICC/IF | 1:100-1:1000 |
| IHC-P | Assay dependent |
| IP | 1:100-1:500 |

Not tested in other applications.

Calculated MW 56 kDa. ([Note](#))

Product Note This antibody is raised against human AKT1 phosphorylated at Ser473. Based on sequence homology, it is predicted to react with AKT2 and AKT3 when phosphorylated at the corresponding residues - AKT2 Ser474 and AKT3 Ser472.

Properties

| | |
|---------------|--|
| Form | Liquid |
| Buffer | PBS, 1% BSA, 20% Glycerol |
| Preservative | 0.025% ProClin 300 |
| Storage | Store as concentrated solution. Centrifuge briefly prior to opening vial. For short-term storage (1-2 weeks), store at 4°C. For long-term storage, aliquot and store at -20°C or below. Avoid multiple freeze-thaw cycles. |
| Concentration | 1 mg/ml (Please refer to the vial label for the specific concentration.) |
| Immunogen | Carrier-protein conjugated synthetic peptide surrounding phospho Ser473 of human AKT. The exact sequence is proprietary. |
| Purification | Purified by antigen-affinity chromatography. |
| Conjugation | Unconjugated |



For full product information, images and publications, please visit our [website](#).

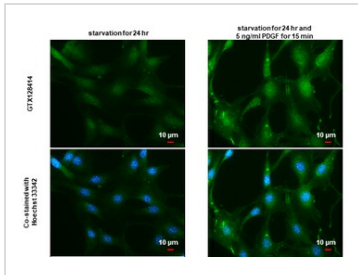
Date 2025 / 08 / 05 Page 1 of 2

For laboratory research use only. Not for any clinical, therapeutic, or diagnostic use in humans or animals. Not for animal or human consumption.

Note

Purchasers shall not, and agree not to enable third parties to, analyze, copy, reverse engineer or otherwise attempt to determine the structure or sequence of the product.

DATA IMAGES



GTx128414 ICC/IF Image

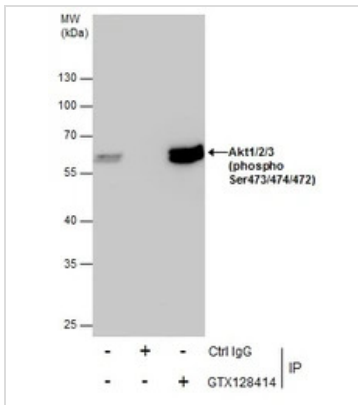
AKT (phospho Ser473) antibody detects AKT (phospho Ser473) protein by immunofluorescent analysis.

Sample: NIH3T3 cells were fixed in 4% paraformaldehyde at RT for 15 min.

Green: AKT (phospho Ser473) stained by AKT (phospho Ser473) antibody (GTx128414) diluted at 1:500.

Blue: Hoechst 33342 staining.

Scale bar = 10 μm.

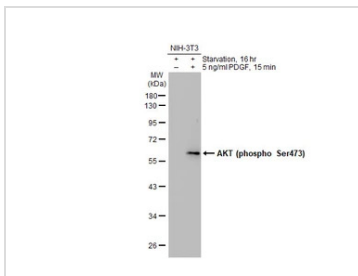


GTx128414 IP Image

Immunoprecipitation of Akt1/2/3 (phospho Ser473/474/472) protein from 293T whole cell extracts using 5 μg of Akt1/2/3 (phospho Ser473/474/472) antibody (GTx128414).

Western blot analysis was performed using Akt1/2/3 (phospho Ser473/474/472) antibody (GTx128414).

EasyBlot anti-Rabbit IgG (GTx221666-01) was used as a secondary reagent.



GTx128414 WB Image

Untreated (–) and treated (+) NIH-3T3 whole cell extracts (30 μg) were separated by 10% SDS-PAGE, and the membrane was blotted with AKT (phospho Ser473) antibody (GTx128414) diluted at 1:500. The HRP-conjugated anti-rabbit IgG antibody (GTx213110-01) was used to detect the primary antibody.



For full product information, images and publications, please visit our [website](https://www.genetex.com).