

# ATG9A antibody

**Cat. No. GTX128427**

<b>Host</b>	Rabbit
<b>Clonality</b>	Polyclonal
<b>Isotype</b>	IgG
<b>Applications</b>	WB, ICC/IF, IHC-P, IP
<b>Reactivity</b>	Human, Mouse, Rat

References ( 7 )

★★★★★ Review ( 1 )

Package

100 µl, 25 µl

## Applications

### Application Note

\*Optimal dilutions/concentrations should be determined by the researcher.

Suggested dilution	Recommended dilution
WB	1:500-1:3000
ICC/IF	1:100-1:1000
IHC-P	1:100-1:1000
IP	1:100-1:500

Not tested in other applications.

**Calculated MW** 94 kDa. ( [Note](#) )

## Properties

<b>Form</b>	Liquid
<b>Buffer</b>	PBS, 20% Glycerol
<b>Preservative</b>	0.025% ProClin 300
<b>Storage</b>	Store as concentrated solution. Centrifuge briefly prior to opening vial. For short-term storage (1-2 weeks), store at 4°C. For long-term storage, aliquot and store at -20°C or below. Avoid multiple freeze-thaw cycles.
<b>Concentration</b>	0.98 mg/ml (Please refer to the vial label for the specific concentration.)
<b>Immunogen</b>	Carrier-protein conjugated synthetic peptide encompassing a sequence within the C-terminus region of human ATG9A. The exact sequence is proprietary.
<b>Purification</b>	Purified by antigen-affinity chromatography.
<b>Conjugation</b>	Unconjugated

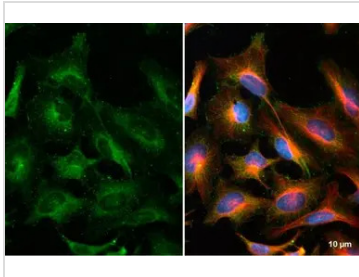


For full product information, images and publications, please visit our [website](#).

For laboratory research use only. Not for any clinical, therapeutic, or diagnostic use in humans or animals. Not for animal or human consumption.

**Note**

Purchasers shall not, and agree not to enable third parties to, analyze, copy, reverse engineer or otherwise attempt to determine the structure or sequence of the product.

**DATA IMAGES**

**GTx128427 ICC/IF Image**

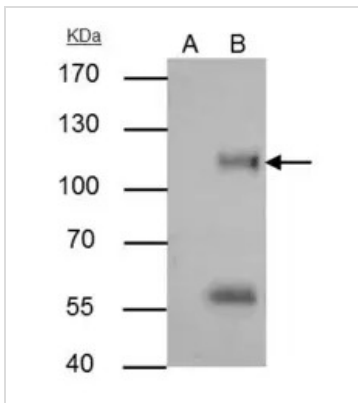
ATG9A antibody detects ATG9A protein at cytoplasm by immunofluorescent analysis.

Sample: HeLa cells were fixed in ice-cold MeOH for 5 min.

Green: ATG9A stained by ATG9A antibody (GTx128427) diluted at 1:500.

Red: alpha Tubulin, a cytoskeleton marker, stained by alpha Tubulin antibody [GT114] (GTx628802) diluted at 1:1000.

Blue: Fluoroshield with DAPI (GTx30920).


**GTx128427 IP Image**

ATG9A antibody immunoprecipitates ATG9A protein in IP experiments.

IP samples: HeLa whole cell extract

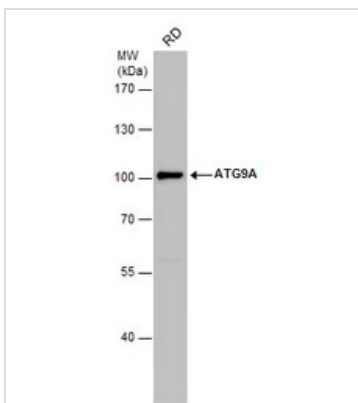
A. Control with 4 µg of preimmune Rabbit IgG

B. Immunoprecipitation of ATG9A protein by 4 µg ATG9A antibody (GTx128427)

7.5 % SDS-PAGE

The immunoprecipitated ATG9A protein was detected by ATG9A antibody (GTx128427) diluted at 1:500.

[EasyBlot anti-rabbit IgG (GTx221666-01) was used as a secondary reagent]


**GTx128427 WB Image**

ATG9A antibody detects ATG9A protein by western blot analysis. Whole cell extracts (30 µg) was separated by 7.5% SDS-PAGE, and the membrane was blotted with ATG9A antibody (GTx128427) diluted by 1:1000.

The HRP-conjugated anti-rabbit IgG antibody (GTx213110-01) was used to detect the primary antibody.



For full product information, images and publications, please visit our [website](https://www.genetex.com).