

AKT2 antibody

Cat. No. GTX128457

Host	Rabbit
Clonality	Polyclonal
Isotype	IgG
Application	WB
Reactivity	Human, Mouse, Rat, Cat, Dog

Reference (1)

★★★★★ Review (1)

Package

100 µl, 25 µl

APPLICATION

Application Note

*Optimal dilutions/concentrations should be determined by the researcher.

Suggested dilution	Recommended dilution
WB	1:500-1:20000
Not tested in other applications.	
Calculated MW	56 kDa. (Note)
Product Note	Knockdown/Knockout validation was supported by customer review data.

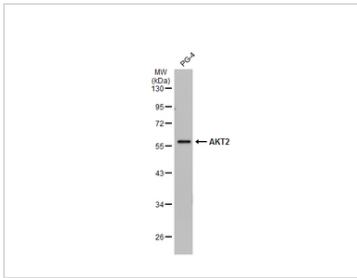
PROPERTIES

Form	Liquid
Buffer	PBS, 20% Glycerol
Preservative	0.01% Thimerosal
Storage	Store as concentrated solution. Centrifuge briefly prior to opening vial. For short-term storage (1-2 weeks), store at 4°C. For long-term storage, aliquot and store at -20°C or below. Avoid multiple freeze-thaw cycles.
Concentration	1 mg/ml (Please refer to the vial label for the specific concentration.)
Immunogen	Carrier-protein conjugated synthetic peptide encompassing a sequence within the N-terminus region of human Akt2. The exact sequence is proprietary.
Purification	Purified by antigen-affinity chromatography.
Conjugation	Unconjugated
Note	<p>For laboratory research use only. Not for any clinical, therapeutic, or diagnostic use in humans or animals. Not for animal or human consumption.</p> <p>Purchasers shall not, and agree not to enable third parties to, analyze, copy, reverse engineer or otherwise attempt to determine the structure or sequence of the product.</p>



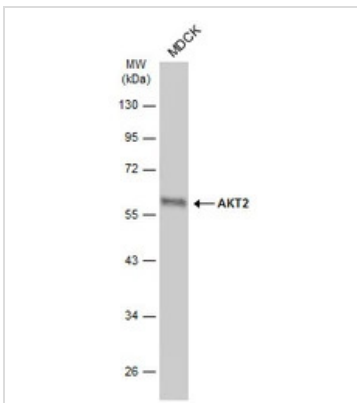
For full product information, images and publications, please visit our [website](#).

DATA IMAGES



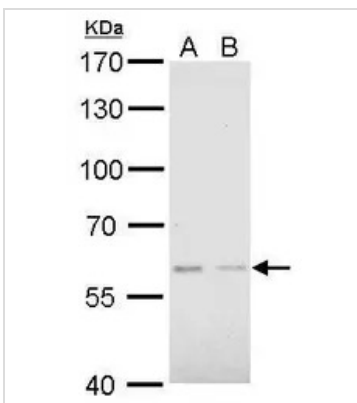
GTKX128457 WB Image

PG-4 whole cell extract (30 µg) was separated by 10% SDS-PAGE, and the membrane was blotted with AKT2 antibody (GTKX128457) diluted at 1:1000. The HRP-conjugated anti-rabbit IgG antibody (GTKX213110-01) was used to detect the primary antibody.



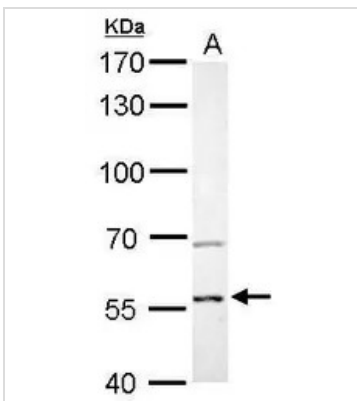
GTKX128457 WB Image

Whole cell extract (30 µg) was separated by 10% SDS-PAGE, and the membrane was blotted with AKT2 antibody (GTKX128457) diluted at 1:1000. The HRP-conjugated anti-rabbit IgG antibody (GTKX213110-01) was used to detect the primary antibody, and the signal was developed with Trident ECL plus-Enhanced.



GTKX128457 WB Image

Akt2 antibody detects Akt2 protein by Western blot analysis.
A. 30 µg Raw264.7 whole cell lysate/extract
B. 30 µg C2C12 whole cell lysate/extract
7.5 % SDS-PAGE
Akt2 antibody (GTKX128457) dilution: 1:500



GTKX128457 WB Image

Akt2 antibody detects Akt2 protein by Western blot analysis.
A. 30 µg PC-12 whole cell lysate/extract
7.5 % SDS-PAGE
Akt2 antibody (GTKX128457) dilution: 1:500



For full product information, images and publications, please visit our [website](https://www.genetex.com).