

AKT2 antibody

Cat. No. GTX128458

Host	Rabbit
Clonality	Polyclonal
Isotype	IgG
Application	WB, IHC-P
Reactivity	Human

★★★★★ Review (1)

Package
100 µl, 25 µl

APPLICATION

Application Note

*Optimal dilutions/concentrations should be determined by the researcher.

Suggested dilution	Recommended dilution
WB	1:500-1:3000
IHC-P	1:100-1:1000

Not tested in other applications.

Calculated MW	56 kDa. (Note)
Product Note	Knockdown/Knockout validation was supported by customer review data.

PROPERTIES

Form	Liquid
Buffer	PBS, 20% Glycerol
Preservative	0.01% Thimerosal
Storage	Store as concentrated solution. Centrifuge briefly prior to opening vial. For short-term storage (1-2 weeks), store at 4°C. For long-term storage, aliquot and store at -20°C or below. Avoid multiple freeze-thaw cycles.
Concentration	1.2 mg/ml (Please refer to the vial label for the specific concentration.)
Immunogen	Carrier-protein conjugated synthetic peptide encompassing a sequence within the C-terminus region of human Akt2. The exact sequence is proprietary.
Purification	Purified by antigen-affinity chromatography.
Conjugation	Unconjugated

Note

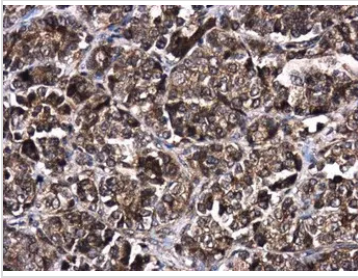
For laboratory research use only. Not for any clinical, therapeutic, or diagnostic use in humans or animals. Not for animal or human consumption.

Purchasers shall not, and agree not to enable third parties to, analyze, copy, reverse engineer or otherwise attempt to determine the structure or sequence of the product.



For full product information, images and publications, please visit our [website](#).

DATA IMAGES



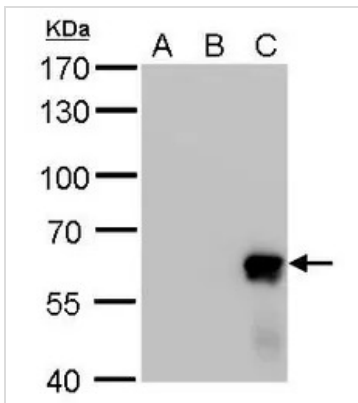
GTK128458 IHC-P Image

AKT2 antibody detects AKT2 protein at cytoplasm and nucleus in human oral carcinoma by immunohistochemical analysis.

Sample: Paraffin-embedded human oral carcinoma.

AKT2 antibody (GTK128458) diluted at 1:400.

Antigen Retrieval: Citrate buffer, pH 6.0, 15 min



GTK128458 WB Image

Akt2 antibody detects Akt2 protein by Western blot analysis.

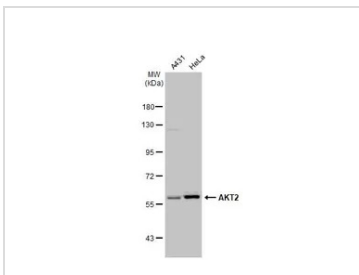
A. 30 µg 293T whole cell lysate/extract

B. 30 µg whole cell lysate/extract of HA-human Akt1-transfected 293T cells

C. 5 µg whole cell lysate/extract of HA-human Akt2-transfected 293T cells

7.5 % SDS-PAGE

Akt2 antibody (GTK128458) dilution: 1:20000



GTK128458 WB Image

Various whole cell extracts (30 µg) were separated by 7.5% SDS-PAGE, and the membrane was blotted with AKT2 antibody (GTK128458) diluted at 1:1000. The HRP-conjugated anti-rabbit IgG antibody (GTK213110-01) was used to detect the primary antibody.



For full product information, images and publications, please visit our [website](https://www.genetex.com).