

mCherry antibody

Cat. No. GTX128508

Host	Rabbit
Clonality	Polyclonal
Isotype	IgG
Applications	WB, ICC/IF, IHC-Fr, IHC-Wm, IP, PLA
Reactivity	Species independent

References (82)

★★★★★ Review (2)

Package

100 µl, 25 µl

Applications

Application Note

*Optimal dilutions/concentrations should be determined by the researcher.

Suggested dilution	Recommended dilution
WB	1:1000-1:10000
ICC/IF	1:100-1:1000
IHC-Fr	Assay dependent
IHC-Wm	1:100-1:500
IP	1:100-1:500
PLA	Assay dependent

Not tested in other applications.

Calculated MW 27 kDa. ([Note](#))**Product Note** This antibody is specific for mCherry protein, and it does not cross-react with RFP and GFP.

Properties

Form	Liquid
Buffer	PBS, 1% BSA, 20% Glycerol
Preservative	0.025% ProClin 300
Storage	Store as concentrated solution. Centrifuge briefly prior to opening vial. For short-term storage (1-2 weeks), store at 4°C. For long-term storage, aliquot and store at -20°C or below. Avoid multiple freeze-thaw cycles.
Concentration	0.22 mg/ml (Please refer to the vial label for the specific concentration.)
Immunogen	Full length mCherry recombinant protein
Purification	Purified by antigen-affinity chromatography.
Conjugation	Unconjugated

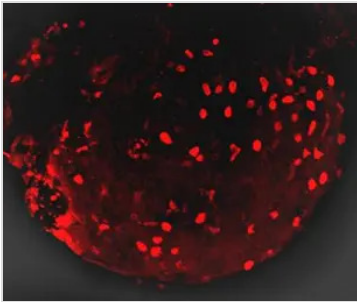


For full product information, images and publications, please visit our [website](#).

For laboratory research use only. Not for any clinical, therapeutic, or diagnostic use in humans or animals. Not for animal or human consumption.

Note
 Purchasers shall not, and agree not to enable third parties to, analyze, copy, reverse engineer or otherwise attempt to determine the structure or sequence of the product.

DATA IMAGES

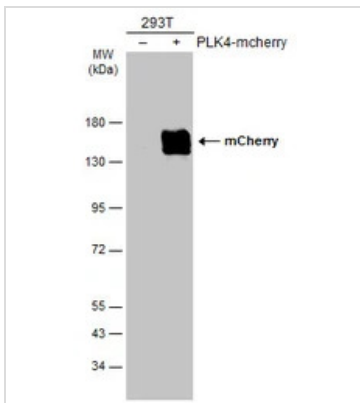


GTX128508 IHC-Wm Image

mCherry antibody labels mCherry-expressing cells on zebrafish embryos by whole mount immunohistochemical analysis.

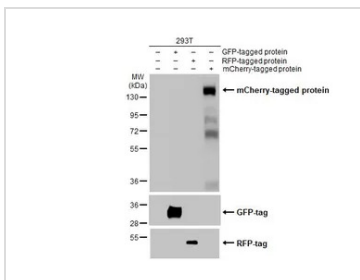
Sample: 2 days-post-fertilization zebrafish embryo.

mCherry antibody labels mCherry-expressing cells (GTX128508) dilution: 1:100.



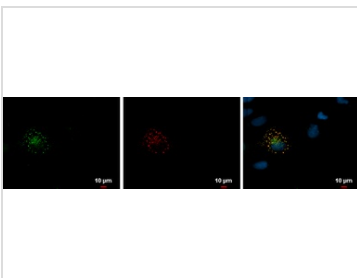
GTX128508 WB Image

Non-transfected (-) and transfected (+) 293T whole cell extracts (30 µg) were separated by 7.5% SDS-PAGE, and the membrane was blotted with mCherry antibody (GTX128508) diluted at 1:5000. The HRP-conjugated anti-rabbit IgG antibody (GTX213110-01) was used to detect the primary antibody.



GTX128508 WB Image

Non-transfected (-) and transfected (+) 293T whole cell extracts (30 µg) were separated by gradient gel% SDS-PAGE, and the membrane was blotted with mCherry antibody (GTX128508) diluted at 1:10000. The HRP-conjugated anti-rabbit IgG antibody (GTX213110-01) was used to detect the primary antibody.



GTX128508 ICC/IF Image

mCherry antibody detects mCherry protein at mCherry fusion protein by immunofluorescent analysis.

Sample: mCherry fusion protein-transfected HeLa cells were fixed in 4% paraformaldehyde at RT for 30 min, then Triton X-100 for 1 min.

Green: mCherry protein stained by mCherry antibody (GTX128508) diluted at 1:500.

Red: mCherry is expressed in the transfected cell. Blue: Hoechst 33342 staining.



For full product information, images and publications, please visit our [website](#).