

mCherry antibody

Cat. No. GTX128509

Host	Rabbit
Clonality	Polyclonal
Isotype	IgG
Applications	WB, ICC/IF, IP
Reactivity	Species independent

References (6)

Package

100 µl, 25 µl

Applications

Application Note

*Optimal dilutions/concentrations should be determined by the researcher.

Suggested dilution	Recommended dilution
WB	1:500-1:3000
ICC/IF	Assay dependent
IP	1:100-1:500

Not tested in other applications.

Calculated MW 27 kDa. ([Note](#))

Properties

Form	Liquid
Buffer	PBS, 1% BSA, 20% Glycerol
Preservative	0.025% ProClin 300
Storage	Store as concentrated solution. Centrifuge briefly prior to opening vial. For short-term storage (1-2 weeks), store at 4°C. For long-term storage, aliquot and store at -20°C or below. Avoid multiple freeze-thaw cycles.
Concentration	0.07 mg/ml (Please refer to the vial label for the specific concentration.)
Immunogen	Recombinant protein conjugated synthetic peptide encompassing a sequence within the center region of mCherry. The exact sequence is proprietary.
Purification	Purified by antigen-affinity chromatography.
Conjugation	Unconjugated

Note

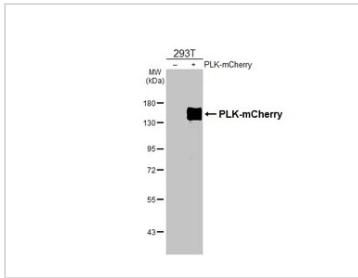
For laboratory research use only. Not for any clinical, therapeutic, or diagnostic use in humans or animals. Not for animal or human consumption.

Purchasers shall not, and agree not to enable third parties to, analyze, copy, reverse engineer or otherwise attempt to determine the structure or sequence of the product.



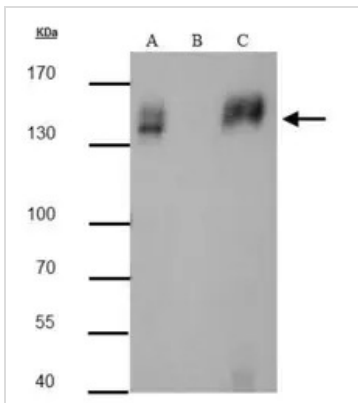
For full product information, images and publications, please visit our [website](#).

DATA IMAGES



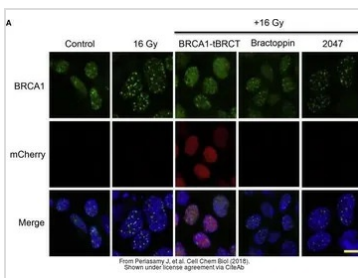
GTX128509 WB Image

Non-transfected (–) and transfected (+) 293T whole cell extracts (30 µg) were separated by 7.5% SDS-PAGE, and the membrane was blotted with mCherry antibody (GTX128509) diluted at 1:1000. The HRP-conjugated anti-rabbit IgG antibody (GTX213110-01) was used to detect the primary antibody.



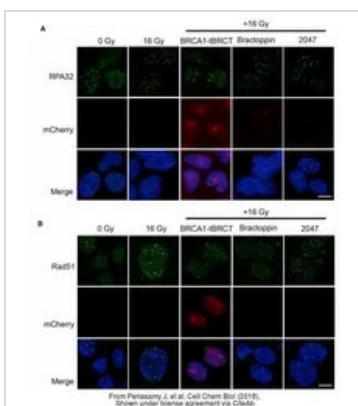
GTX128509 IP Image

mcherry antibody immunoprecipitates mcherry protein in IP experiments. IP Sample: 293T whole cell lysate/extract A : 20 µg whole cell lysate/extract of mcherry protein expressing 293T cells B : Control with 2.5 µg of pre-immune rabbit IgG C : Immunoprecipitation of mcherry protein by 2.5 µg of mcherry antibody (GTX128509) 7.5% SDS-PAGE The immunoprecipitated mcherry protein was detected by mcherry antibody (GTX128509) diluted at 1 : 3000. EasyBlot anti-rabbit IgG (HRP) (GTX221666-01) was used as a secondary reagent.



GTX128509 ICC/IF Image

The data was published in the journal Cell Chem Biol in 2018. [PMID: 29606576](https://pubmed.ncbi.nlm.nih.gov/29606576/)



GTX128509 ICC/IF Image

The data was published in the journal Cell Chem Biol in 2018. [PMID: 29606576](https://pubmed.ncbi.nlm.nih.gov/29606576/)



For full product information, images and publications, please visit our [website](https://www.genetex.com).