

Influenza B virus Nucleoprotein antibody

Cat. No. GTX128538

| | |
|---------------------|-----------------------------------|
| Host | Rabbit |
| Clonality | Polyclonal |
| Isotype | IgG |
| Applications | WB, ICC/IF, ELISA, Sandwich ELISA |
| Reactivity | Influenza B virus |

References (7)

Package

100 µl, 25 µl

Applications

Application Note

*Optimal dilutions/concentrations should be determined by the researcher.

| Suggested dilution | Recommended dilution |
|--------------------|----------------------|
| WB | 1:5000-1:20000 |
| ICC/IF | 1:100-1:2000 |
| ELISA | Assay dependent |
| Sandwich ELISA | Assay dependent |

Note : Capture : GTX629882 / GTX629883, Detection : GTX128538

Not tested in other applications.

Calculated MW 62 kDa. ([Note](#))

Properties

| | |
|----------------------|--|
| Form | Liquid |
| Buffer | PBS, 1% BSA, 20% Glycerol |
| Preservative | 0.025% ProClin 300 |
| Storage | Store as concentrated solution. Centrifuge briefly prior to opening vial. For short-term storage (1-2 weeks), store at 4°C. For long-term storage, aliquot and store at -20°C or below. Avoid multiple freeze-thaw cycles. |
| Concentration | 0.4 mg/ml (Please refer to the vial label for the specific concentration.) |
| Immunogen | Recombinant fragment corresponding to N-terminal region of Influenza B virus NP (B/Taiwan/753/2005). The exact sequence is proprietary. |
| Purification | Purified by antigen-affinity chromatography. |
| Conjugation | Unconjugated |



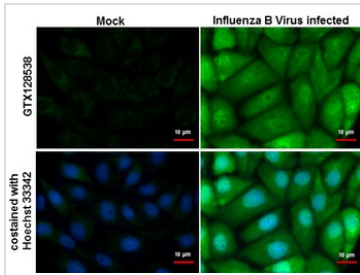
For full product information, images and publications, please visit our [website](#).

For laboratory research use only. Not for any clinical, therapeutic, or diagnostic use in humans or animals. Not for animal or human consumption.

Note

Purchasers shall not, and agree not to enable third parties to, analyze, copy, reverse engineer or otherwise attempt to determine the structure or sequence of the product.

DATA IMAGES



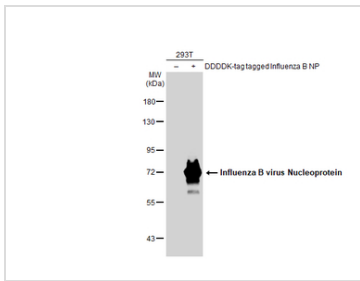
GTx128538 ICC/IF Image

Influenza B Virus NP antibody detects Influenza B Virus NP protein by immunofluorescent analysis.

Sample: Influenza B Virus infected MDCK cells were fixed in paraformaldehyde.

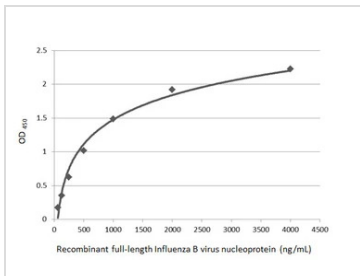
Green: Influenza B Virus NP protein stained by Influenza B Virus NP antibody (GTx128538) diluted at 1:2000.

Blue: Hoechst 33342 staining.



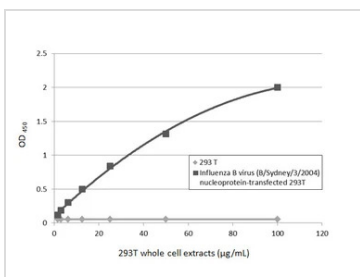
GTx128538 WB Image

Non-transfected (–) and transfected (+) 293T whole cell extracts (30 μg) were separated by 7.5% SDS-PAGE, and the membrane was blotted with Influenza B virus Nucleoprotein antibody (GTx128538) diluted at 1:5000. The HRP-conjugated anti-rabbit IgG antibody (GTx213110-01) was used to detect the primary antibody.



GTx128538 ELISA Image

Sandwich ELISA detection of recombinant full-length Influenza B virus NP (nucleoprotein) protein, Flag tag (GTx135867-pro) using Influenza B virus Nucleoprotein antibody [GT371] (GTx629882) as capture antibody at concentration of 5 μg/mL and Influenza B virus Nucleoprotein antibody (GTx128538) as detection antibody at concentration of 1 μg/mL. Rabbit IgG antibody (HRP) (GTx213110-01) was diluted at 1:10000 and used to detect the primary antibody.



GTx128538 ELISA Image

Sandwich ELISA detection of non-transfected and Influenza B virus (B/Sydney/3/2004) nucleoprotein transfected 293T whole cell extracts using Influenza B virus Nucleoprotein antibody [GT382] (GTx629883) as capture antibody at concentration of 5 μg/mL and Influenza B virus Nucleoprotein antibody (GTx128538) as detection antibody at concentration of 1 μg/mL. Rabbit IgG antibody (HRP) (GTx213110-01) was diluted at 1:10000 and used to detect the primary antibody.



For full product information, images and publications, please visit our [website](http://www.genetex.com).