

Influenza B virus Nucleoprotein antibody

Cat. No. GTX128539

Host	Rabbit
Clonality	Polyclonal
Isotype	IgG
Application	WB, ICC/IF, ELISA, Sandwich ELISA
Reactivity	Influenza B virus

Reference (1)
Package
100 µl, 25 µl

APPLICATION

Application Note

*Optimal dilutions/concentrations should be determined by the researcher.

Suggested dilution	Recommended dilution
WB	1:5000-1:100000
ICC/IF	1:100-1:1000
ELISA	Assay dependent
Sandwich ELISA	Assay dependent

Note : Capture : GTX629882 / GTX629883, Detection : GTX128539 or Capture : GTX128539, Detection : GTX629882

Not tested in other applications.

PROPERTIES

Form	Liquid
Buffer	PBS, 20% Glycerol
Preservative	0.01% Thimerosal
Storage	Store as concentrated solution. Centrifuge briefly prior to opening vial. For short-term storage (1-2 weeks), store at 4°C. For long-term storage, aliquot and store at -20°C or below. Avoid multiple freeze-thaw cycles.
Concentration	1 mg/ml (Please refer to the vial label for the specific concentration.)
Immunogen	Recombinant fragment corresponding to C-terminal region of Influenza B virus NP (B/Taiwan/753/2005). The exact sequence is proprietary.
Purification	Purified by antigen-affinity chromatography.
Conjugation	Unconjugated

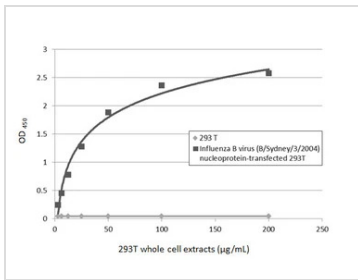
Note

For laboratory research use only. Not for any clinical, therapeutic, or diagnostic use in humans or animals. Not for animal or human consumption.

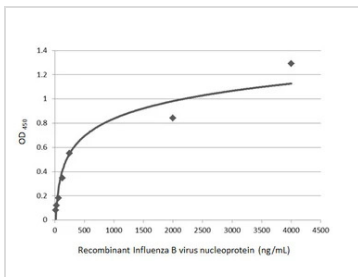
Purchasers shall not, and agree not to enable third parties to, analyze, copy, reverse engineer or otherwise attempt to determine the structure or sequence of the product.



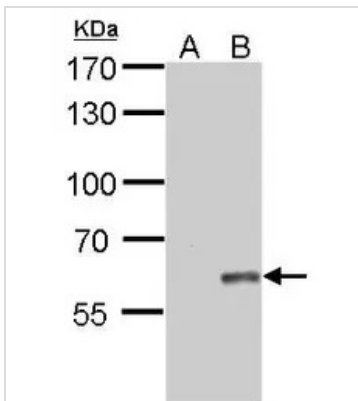
For full product information, images and publications, please visit our [website](#).

DATA IMAGES

GTx128539 ELISA Image

Sandwich ELISA detection of non-transfected and Influenza B virus (B/Sydney/3/2004) nucleoprotein transfected 293T whole cell extracts using Influenza B virus Nucleoprotein antibody [GT382] (GTx629883) as capture antibody at concentration of 5 µg/mL and Influenza B virus Nucleoprotein antibody (GTx128539) as detection antibody at concentration of 1 µg/mL. Rabbit IgG antibody (HRP) (GTx213110-01) was diluted at 1:10000 and used to detect the primary antibody.


GTx128539 ELISA Image

Sandwich ELISA detection of recombinant full-length Influenza B virus NP (nucleoprotein) protein, DDDDK tag (GTx135867-pro) using Influenza B virus Nucleoprotein antibody (GTx128539) as capture antibody at concentration of 5 µg/mL and Influenza B virus Nucleoprotein antibody [GT371] (GTx629882) as detection antibody at concentration of 1 µg/mL. Mouse IgG antibody (HRP) (GTx213111-01) was diluted at 1:10000 and used to detect the primary antibody.


GTx128539 WB Image

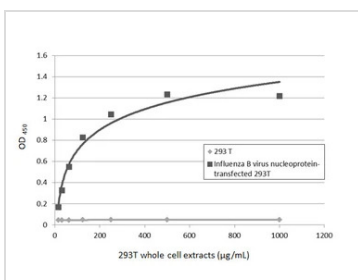
Influenza B Virus NP antibody detects Influenza B Virus NP protein by Western blot analysis.

A. 20 µl non infected medium

B. 20 µl Influenza B virus (Taiwan B70555) infected medium

7.5 % SDS-PAGE

Influenza B Virus NP antibody (GTx128539) dilution: 1:100000


GTx128539 ELISA Image

Sandwich ELISA detection of non-transfected and Influenza B virus nucleoprotein transfected 293T whole cell extracts using Influenza B virus Nucleoprotein antibody [GT371] (GTx629882) as capture antibody at concentration of 5 µg/mL and Influenza B virus Nucleoprotein antibody (GTx128539) as detection antibody at concentration of 1 µg/mL. Rabbit IgG antibody (HRP) (GTx213110-01) was diluted at 1:10000 and used to detect the primary antibody.



For full product information, images and publications, please visit our [website](https://www.genetex.com).