

MRGX1 antibody

Cat. No. GTX12856

Host	Rabbit
Clonality	Polyclonal
Isotype	IgG
Applications	ICC/IF, IHC-P
Reactivity	Human, Monkey

Package

25 µg

Applications

Application Note

*Optimal dilutions/concentrations should be determined by the researcher.

Suggested dilution	Recommended dilution
ICC/IF	Assay dependent
IHC-P	12 µg/ml

Not tested in other applications.

Properties

Form	Liquid
Buffer	PBS
Preservative	0.1% Sodium azide
Storage	Store as concentrated solution. Centrifuge briefly prior to opening vial. For short-term storage (1-2 weeks), store at 4°C. For long-term storage, aliquot and store at -20°C or below. Avoid multiple freeze-thaw cycles.
Concentration	1 mg/ml (Please refer to the vial label for the specific concentration.)
Immunogen	Synthetic 14 amino acid peptide from N-terminal extracellular domain of human MRGPRX1 / MRGX1.
Purification	Purified by affinity chromatography
Conjugation	Unconjugated

Note

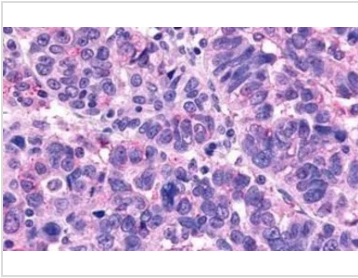
For laboratory research use only. Not for any clinical, therapeutic, or diagnostic use in humans or animals. Not for animal or human consumption.

Purchasers shall not, and agree not to enable third parties to, analyze, copy, reverse engineer or otherwise attempt to determine the structure or sequence of the product.



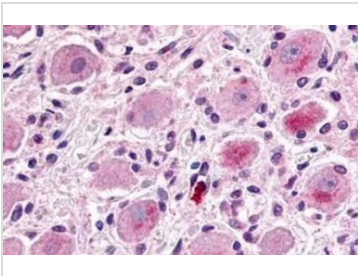
For full product information, images and publications, please visit our [website](#).

DATA IMAGES



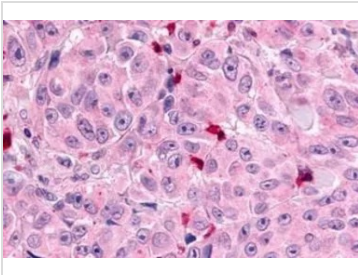
GTX12856 IHC-P Image

IHC-P analysis of human ovary, carcinoma tissue using GTX12856 MRGX1 antibody.
Antigen retrieval : Heat-induced antigen retrieval



GTX12856 IHC-P Image

IHC-P analysis of human ganglion cells and schwann cells tissue using GTX12856 MRGX1 antibody.
Antigen retrieval : Heat-induced antigen retrieval



GTX12856 IHC-P Image

IHC-P analysis of human skin, melanoma tissue using GTX12856 MRGX1 antibody.
Antigen retrieval : Heat-induced antigen retrieval



For full product information, images and publications, please visit our [website](#).