

Casein Kinase 2 beta (phospho Ser209) antibody

Cat. No. GTX12861

Host	Rabbit
Clonality	Polyclonal
Isotype	IgG
Applications	WB, FCM
Reactivity	Human

Package

50 µl

Applications

Application Note

*Optimal dilutions/concentrations should be determined by the researcher.

Suggested dilution	Recommended dilution
WB	1:250
FCM	1:20

Not tested in other applications.

Calculated MW 25 kDa. ([Note](#))

Product Note Does not cross react with Casein Kinase 2 alpha [pS₃₆] (mouse), [pS₃₆₂], [pS₃₇₀], or Casein Kinase 2 beta pS₂.

Properties

Form	Liquid
Buffer	PBS, 0.1% BSA, 50% Glycerol
Preservative	0.05% Sodium azide
Storage	Store as concentrated solution. Centrifuge briefly prior to opening vial. For short-term storage (1-2 weeks), store at 4°C. For long-term storage, aliquot and store at -20°C or below. Avoid multiple freeze-thaw cycles.
Concentration	Batch dependent (Please refer to the vial label for the specific concentration.)
Immunogen	The antiserum was produced against a chemically synthesized phosphopeptide derived from the region of human CK2α that contains serine 209. The sequence is conserved in mouse, rat, chicken, pig and rabbit.
Purification	Purified by antigen-affinity chromatography
Conjugation	Unconjugated

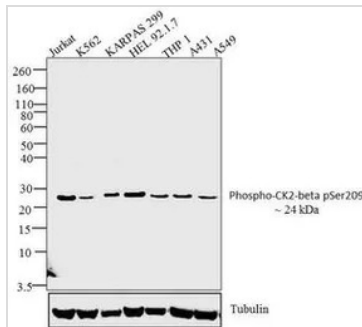
Note

For laboratory research use only. Not for any clinical, therapeutic, or diagnostic use in humans or animals. Not for animal or human consumption.

Purchasers shall not, and agree not to enable third parties to, analyze, copy, reverse engineer or otherwise attempt to determine the structure or sequence of the product.

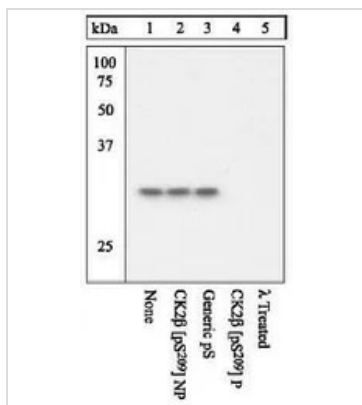


For full product information, images and publications, please visit our [website](#).

DATA IMAGES

GTX12861 WB Image

WB analysis of whole cell extract (30ug) of Jurkat (Lane 1), K562 (Lane 2), KARPAS 299 (Lane 3), HEL 92.1.7 (Lane 4), THP1 (Lane 5), A431 (Lane 6) and A549 (Lane 7) using GTX12861 Casein Kinase 2 beta (phospho Ser209) antibody.

Dilution : 1:250


GTX12861 WB Image

WB analysis of HeLa cells using GTX12861 Casein Kinase 2 beta (phospho Ser209) antibody.

The primary antibody was prior incubated with different peptide (Lane 1~4).

The membrane treated with lambda phosphatase (Lane 5) eliminates the signal further verifying that the antibody is phospho-specific.



For full product information, images and publications, please visit our [website](https://www.genetex.com).