

Hbae1 antibody

Cat. No. GTX128636

Host	Rabbit
Clonality	Polyclonal
Isotype	IgG
Applications	WB, IHC-Wm
Reactivity	Zebrafish

Package
100 µl, 25 µl

Applications

Application Note

*Optimal dilutions/concentrations should be determined by the researcher.

Suggested dilution	Recommended dilution
WB	1:500-1:3000
IHC-Wm	1:100-1:500

Not tested in other applications.

Properties

Form	Liquid
Buffer	PBS, 20% Glycerol
Preservative	0.025% ProClin 300
Storage	Store as concentrated solution. Centrifuge briefly prior to opening vial. For short-term storage (1-2 weeks), store at 4°C. For long-term storage, aliquot and store at -20°C or below. Avoid multiple freeze-thaw cycles.
Concentration	0.54 mg/ml (Please refer to the vial label for the specific concentration.)
Immunogen	Recombinant protein encompassing a sequence within the center region of zebrafish Hbae1. The exact sequence is proprietary.
Purification	Purified by antigen-affinity chromatography.
Conjugation	Unconjugated

Note

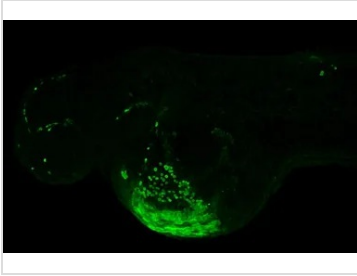
For laboratory research use only. Not for any clinical, therapeutic, or diagnostic use in humans or animals. Not for animal or human consumption.

Purchasers shall not, and agree not to enable third parties to, analyze, copy, reverse engineer or otherwise attempt to determine the structure or sequence of the product.



For full product information, images and publications, please visit our [website](#).

DATA IMAGES

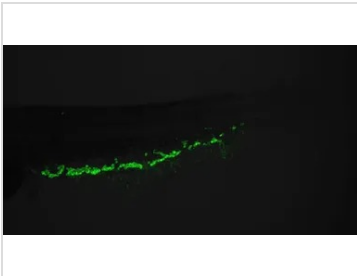


GTX128636 IHC-Wm Image

Hbae1 antibody detects Hbae1 protein on whole mount zebrafish by immunohistochemical analysis.

Sample: Paraformaldehyde-fixed 2 days-post-fertilization zebrafish embryo.

Green: Hbae1 stained by Hbae1 antibody (GTX128636) diluted at 1:100.

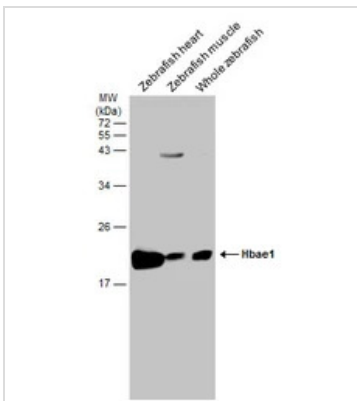


GTX128636 IHC-Wm Image

Hbae1 antibody detects Hbae1 protein on whole mount zebrafish by immunohistochemical analysis.

Sample: Paraformaldehyde-fixed 2 days-post-fertilization zebrafish embryo.

Green: Hbae1 stained by Hbae1 antibody (GTX128636) diluted at 1:100.



GTX128636 WB Image

Various tissue extracts (30 µg) were separated by 15% SDS-PAGE, and the membrane was blotted with Hbae1 antibody (GTX128636) diluted at 1:1000. The HRP-conjugated anti-rabbit IgG antibody (GTX213110-01) was used to detect the primary antibody.



For full product information, images and publications, please visit our [website](https://www.genetex.com).