

Gfap antibody

Cat. No. GTX128645

Host	Rabbit
Clonality	Polyclonal
Isotype	IgG
Application	WB, IHC-Wm
Reactivity	Zebrafish

Package
100 µl, 25 µl

APPLICATION

Application Note

*Optimal dilutions/concentrations should be determined by the researcher.

Suggested dilution	Recommended dilution
WB	1:500-1:3000
IHC-Wm	1:100-1:500

Not tested in other applications.

Calculated MW 51 kDa. ([Note](#))

PROPERTIES

Form	Liquid
Buffer	PBS, 20% Glycerol
Preservative	0.025% ProClin 300
Storage	Store as concentrated solution. Centrifuge briefly prior to opening vial. For short-term storage (1-2 weeks), store at 4°C. For long-term storage, aliquot and store at -20°C or below. Avoid multiple freeze-thaw cycles.
Concentration	2.07 mg/ml (Please refer to the vial label for the specific concentration.)
Immunogen	Recombinant protein encompassing a sequence within the center region of zebrafish gfap. The exact sequence is proprietary.
Purification	Purified by antigen-affinity chromatography.
Conjugation	Unconjugated

Note

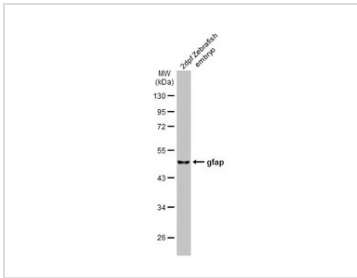
For laboratory research use only. Not for any clinical, therapeutic, or diagnostic use in humans or animals. Not for animal or human consumption.

Purchasers shall not, and agree not to enable third parties to, analyze, copy, reverse engineer or otherwise attempt to determine the structure or sequence of the product.



For full product information, images and publications, please visit our [website](#).

DATA IMAGES



GTX128645 WB Image

Zebrafish embryos extracts (30 μ g) was separated by 10% SDS-PAGE, and the membrane was blotted with gfp antibody (GTX128645) diluted at 1:1000. The HRP-conjugated anti-rabbit IgG antibody (GTX213110-01) was used to detect the primary antibody.

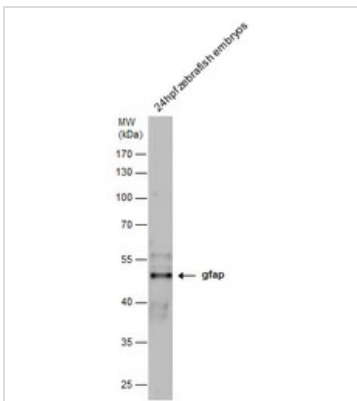


GTX128645 IHC-Wm Image

Gfp antibody detects Gfp protein on zebrafish by whole mount immunohistochemical analysis.

Sample: 1 day-post-fertilization zebrafish embryo.

Gfp antibody (GTX128645) dilution: 1:100.



GTX128645 WB Image

Gfp antibody detects Gfp protein by western blot analysis. Zebrafish tissue extracts (30 μ g) was separated by 10 % SDS-PAGE, and the membrane was blotted with Gfp antibody (GTX128645) at a dilution of 1:1000.



For full product information, images and publications, please visit our [website](https://www.genetex.com).