

# RPS6 (phospho Ser244/247) antibody

**Cat. No. GTX12865**

|                     |              |
|---------------------|--------------|
| <b>Host</b>         | Rabbit       |
| <b>Clonality</b>    | Polyclonal   |
| <b>Isotype</b>      | IgG          |
| <b>Applications</b> | WB           |
| <b>Reactivity</b>   | Human, Mouse |

**Package**  
50 µl

## Applications

### Application Note

\*Optimal dilutions/concentrations should be determined by the researcher.

| Suggested dilution | Recommended dilution |
|--------------------|----------------------|
| WB                 | Assay dependent      |

Not tested in other applications.

**Calculated MW** 29 kDa. ( [Note](#) )

**Product Note** This antibody does not cross react with RPS6 phosphorylated on serines 235 and 236.

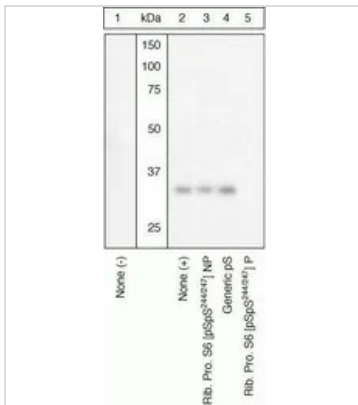
## Properties

|                      |  |
|----------------------|--|
| <b>Form</b>          | Liquid   |
| <b>Buffer</b>        | PBS, 0.1% BSA, 50% Glycerol  |
| <b>Preservative</b>  | 0.05% Sodium azide   |
| <b>Storage</b>       | Store as concentrated solution. Centrifuge briefly prior to opening vial. For short-term storage (1-2 weeks), store at 4°C. For long-term storage, aliquot and store at -20°C or below. Avoid multiple freeze-thaw cycles.   |
| <b>Concentration</b> | Batch dependent (Please refer to the vial label for the specific concentration.)   |
| <b>Immunogen</b>     | The antiserum was produced against a chemically synthesized phosphopeptide derived from the region of human RPS6 that contains serines 244 and 247. The sequence is conserved in mouse and rat.  |
| <b>Purification</b>  | Purified by antigen-affinity chromatography  |
| <b>Conjugation</b>   | Unconjugated   |
| <b>Note</b>          | For laboratory research use only. Not for any clinical, therapeutic, or diagnostic use in humans or animals. Not for animal or human consumption.<br><br>Purchasers shall not, and agree not to enable third parties to, analyze, copy, reverse engineer or otherwise attempt to determine the structure or sequence of the product. |



For full product information, images and publications, please visit our [website](#).

## DATA IMAGES



### GTX12865 WB Image

WB (peptide competition) analysis of HeLa cells treated with TNF-alpha (Lane 2-5) using GTX12865 RPS6 (phospho Ser244/247) antibody prior incubated with the non-phosphopeptide corresponding to the immunogen (Lane 3), a generic phosphoserine-containing peptide (Lane 4), or, the phosphopeptide immunogen (Lane 5) control. The data show that only the immunogen phosphopeptide blocks the signal, demonstrating the specificity of the antibody.



For full product information, images and publications, please visit our [website](https://www.genetex.com).