

ZAP70 (phospho Tyr292) antibody

Cat. No. GTX12868

Host	Rabbit
Clonality	Polyclonal
Isotype	IgG
Applications	WB, IHC-P
Reactivity	Human

Package
50 µl

Applications

Application Note

*Optimal dilutions/concentrations should be determined by the researcher.

Suggested dilution	Recommended dilution
WB	Assay dependent
IHC-P	1:20

Not tested in other applications.

Calculated MW 70 kDa. ([Note](#))

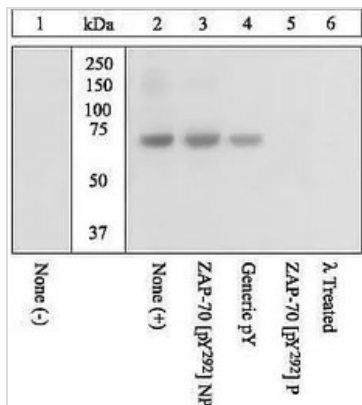
Properties

Form	Liquid
Buffer	PBS, 0.1% BSA, 50% Glycerol
Preservative	0.05% Sodium azide
Storage	Store as concentrated solution. Centrifuge briefly prior to opening vial. For short-term storage (1-2 weeks), store at 4°C. For long-term storage, aliquot and store at -20°C or below. Avoid multiple freeze-thaw cycles.
Concentration	Batch dependent (Please refer to the vial label for the specific concentration.)
Immunogen	The antiserum was produced against a chemically synthesized phosphopeptide derived from a region of human ZAP-70 that contains tyrosine 292. The sequence is conserved in mouse.
Purification	Purified by antigen-affinity chromatography
Conjugation	Unconjugated
Note	For laboratory research use only. Not for any clinical, therapeutic, or diagnostic use in humans or animals. Not for animal or human consumption. Purchasers shall not, and agree not to enable third parties to, analyze, copy, reverse engineer or otherwise attempt to determine the structure or sequence of the product.



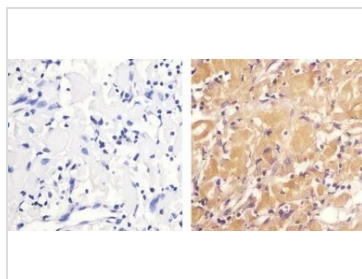
For full product information, images and publications, please visit our [website](#).

DATA IMAGES



GTX12868 WB Image

WB (peptide competition) analysis of Jurkat cells treated with hydrogen peroxide (Lane 2-6) using GTX12868 ZAP70 (phospho Tyr292) antibody prior incubated with the non-phosphopeptide corresponding to the immunogen (Lane 2), a generic phosphotyrosine-containing peptide (Lane 4) or, the phosphopeptide immunogen (Lane 5) control. The data show that only the immunogen phosphopeptide blocks the signal, demonstrating the specificity of the antibody. The membrane treated with phosphatase (Lane 6) eliminates the signal further verifying that the antibody is phospho-specific.



GTX12868 IHC-P Image

IHC-P analysis of human lymph node tissue using GTX12868 ZAP70 (phospho Tyr292) antibody.
 Right : Primary antibody
 Left : Negative control without primary antibody
 Antigen retrieval : 10mM sodium citrate (pH 6.0), microwaved for 8-15 min
 Dilution : 1:20



For full product information, images and publications, please visit our [website](#).