

Gfap antibody

Cat. No. GTX128741

Host	Rabbit
Clonality	Polyclonal
Isotype	IgG
Applications	WB, IHC-Wm
Reactivity	Zebrafish, Fish

References (19)

Package

100 µl, 25 µl

Applications

Application Note

*Optimal dilutions/concentrations should be determined by the researcher.

Suggested dilution	Recommended dilution
WB	1:500-1:3000
IHC-Wm	1:100-1:500

Not tested in other applications.

Calculated MW 51 kDa. ([Note](#))

Properties

Form	Liquid
Buffer	PBS
Preservative	No preservatives
Storage	Store as concentrated solution. Centrifuge briefly prior to opening vial. For short-term storage (1-2 weeks), store at 4°C. For long-term storage, aliquot and store at -20°C or below. Avoid multiple freeze-thaw cycles.
Concentration	1 mg/ml (Please refer to the vial label for the specific concentration.)
Immunogen	Recombinant protein encompassing a sequence within the center region of zebrafish gfap. The exact sequence is proprietary.
Purification	Purified by antigen-affinity chromatography.
Conjugation	Unconjugated

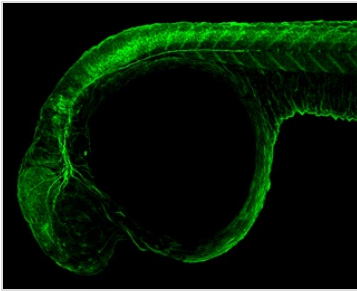
Note

For laboratory research use only. Not for any clinical, therapeutic, or diagnostic use in humans or animals. Not for animal or human consumption.

Purchasers shall not, and agree not to enable third parties to, analyze, copy, reverse engineer or otherwise attempt to determine the structure or sequence of the product.

For full product information, images and publications, please visit our [website](#).

DATA IMAGES



GTX128741 IHC-Wm Image

Gfap antibody detects Gfap protein on zebrafish by whole mount immunohistochemical analysis.

Sample: 1 day-post-fertilization zebrafish embryo.

Gfap antibody (GTX128741) dilution: 1:100.

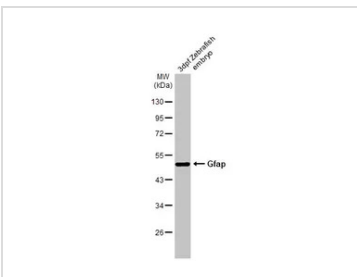


GTX128741 IHC-Wm Image

Gfap antibody detects Gfap protein on zebrafish by whole mount immunohistochemical analysis.

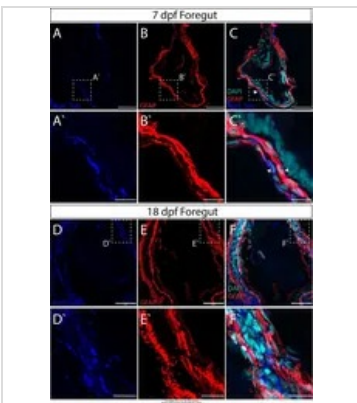
Sample: 1 day-post-fertilization zebrafish embryo.

Gfap antibody (GTX128741) dilution: 1:100.



GTX128741 WB Image

Zebrafish embryo extracts (10 µg) was separated by 10% SDS-PAGE, and the membrane was blotted with Gfap antibody (GTX128741) diluted at 1:1000. The HRP-conjugated anti-rabbit IgG antibody (GTX213110-01) was used to detect the primary antibody.



GTX128741 Image

The data was published in the journal Sci Rep in 2019. [PMID: 31061452](https://pubmed.ncbi.nlm.nih.gov/31061452/)



For full product information, images and publications, please visit our [website](https://www.genetex.com).