

HIF1 beta antibody

Cat. No. GTX128795

Host	Rabbit
Clonality	Polyclonal
Isotype	IgG
Applications	WB, ICC/IF, IHC-P
Reactivity	Human, Mouse

 Review (2)Package
100 µl, 25 µl

Applications

Application Note

*Optimal dilutions/concentrations should be determined by the researcher.

Suggested dilution	Recommended dilution
WB	1:500-1:3000
ICC/IF	1:100-1:1000
IHC-P	1:100-1:1000

Not tested in other applications.

Calculated MW 87 kDa. ([Note](#))

Properties

Form	Liquid
Buffer	PBS, 20% Glycerol
Preservative	0.01% Thimerosal
Storage	Store as concentrated solution. Centrifuge briefly prior to opening vial. For short-term storage (1-2 weeks), store at 4°C. For long-term storage, aliquot and store at -20°C or below. Avoid multiple freeze-thaw cycles.
Concentration	1 mg/ml (Please refer to the vial label for the specific concentration.)
Immunogen	Recombinant protein encompassing a sequence within the C-terminus region of human HIF1 beta. The exact sequence is proprietary.
Purification	Purified by antigen-affinity chromatography.
Conjugation	Unconjugated

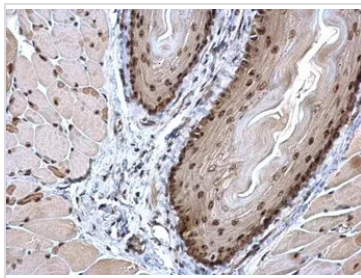
Note

For laboratory research use only. Not for any clinical, therapeutic, or diagnostic use in humans or animals. Not for animal or human consumption.

Purchasers shall not, and agree not to enable third parties to, analyze, copy, reverse engineer or otherwise attempt to determine the structure or sequence of the product.

For full product information, images and publications, please visit our [website](#).

DATA IMAGES



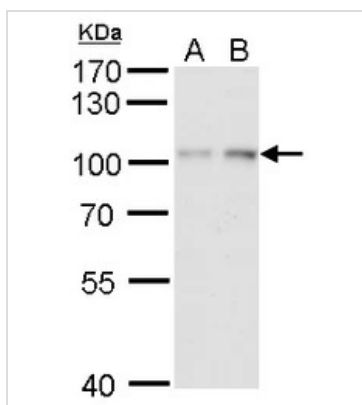
GTX128795 IHC-P Image

HIF1 beta antibody detects HIF1 beta protein at nucleus on mouse esophagus by immunohistochemical analysis.

Sample: Paraffin-embedded mouse esophagus.

HIF1 beta antibody (GTX128795) dilution: 1:500.

Antigen Retrieval: Trilogy™ (EDTA based, pH 8.0) buffer, 15min



GTX128795 WB Image

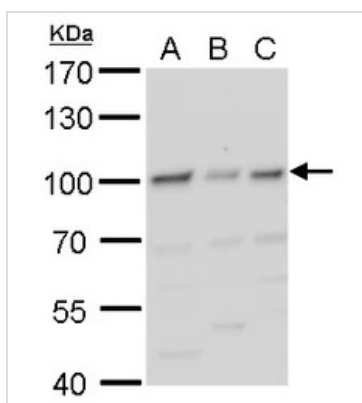
HIF1 beta antibody detects HIF1 beta protein by western blot analysis.

A. 30 µg HepG2 whole cell lysate/extract (untreated)

B. 30 µg HepG2 whole cell lysate/extract (1% O2 treatment for 24 hr)

7.5 % SDS-PAGE

HIF1 beta antibody (GTX128795) dilution: 1:1000



GTX128795 WB Image

HIF1 beta antibody detects HIF1 beta protein by western blot analysis.

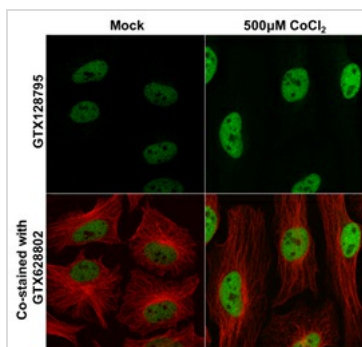
A. 30 µg 293T whole cell lysate/extract

B. 30 µg A431 whole cell lysate/extract

C. 30 µg HeLa whole cell lysate/extract

7.5 % SDS-PAGE

HIF1 beta antibody (GTX128795) dilution: 1:1000



GTX128795 ICC/IF Image

HIF1 beta antibody detects HIF1 beta protein at nucleus by immunofluorescent analysis.

Samples: HeLa cells mock (left) and treated with 500µM CoCl2 for 24hr (right) were fixed in 4% paraformaldehyde at RT for 15 min.

Green: HIF1 beta protein stained by HIF1 beta antibody (GTX128795) diluted at 1:500.

Red: alpha Tubulin, a cytoskeleton marker, stained by alpha Tubulin antibody [GT114] (GTX628802) diluted at 1:1000.



For full product information, images and publications, please visit our [website](http://www.genetex.com).