

SLUG antibody

Cat. No. GTX128796

Host	Rabbit
Clonality	Polyclonal
Isotype	IgG
Applications	WB, IHC-P
Reactivity	Human, Mouse

References (22)

★★★★★ Review (2)

Package

100 µl, 25 µl

Applications

Application Note

*Optimal dilutions/concentrations should be determined by the researcher.

Suggested dilution	Recommended dilution
WB	1:500-1:10000
IHC-P	1:100-1:1000

Not tested in other applications.

Calculated MW 30 kDa. ([Note](#))**Product Note** KO/KD validation is based on published data (PMID: 36699318).

Properties

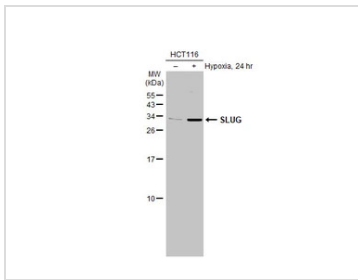
Form	Liquid
Buffer	PBS, 20% Glycerol
Preservative	0.025% ProClin 300
Storage	Store as concentrated solution. Centrifuge briefly prior to opening vial. For short-term storage (1-2 weeks), store at 4°C. For long-term storage, aliquot and store at -20°C or below. Avoid multiple freeze-thaw cycles.
Concentration	1.18 mg/ml (Please refer to the vial label for the specific concentration.)
Immunogen	Recombinant protein encompassing a sequence within the center region of human SLUG. The exact sequence is proprietary.
Purification	Purified by antigen-affinity chromatography.
Conjugation	Unconjugated

Note

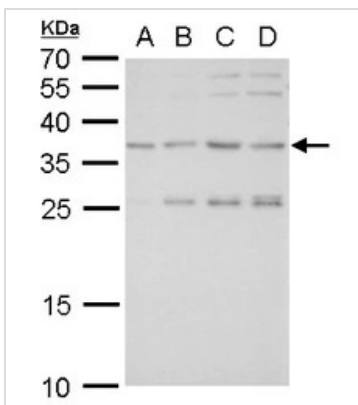
For laboratory research use only. Not for any clinical, therapeutic, or diagnostic use in humans or animals. Not for animal or human consumption.

Purchasers shall not, and agree not to enable third parties to, analyze, copy, reverse engineer or otherwise attempt to determine the structure or sequence of the product.

For full product information, images and publications, please visit our [website](#).

DATA IMAGES

GTx128796 WB Image

Untreated (–) and treated (+) HCT-116 whole cell extract (30 µg) were separated by 15% SDS-PAGE, and the membrane was blotted with SLUG antibody (GTx128796) diluted at 1:500. The HRP-conjugated anti-rabbit IgG antibody (GTx213110-01) was used to detect the primary antibody.


GTx128796 WB Image

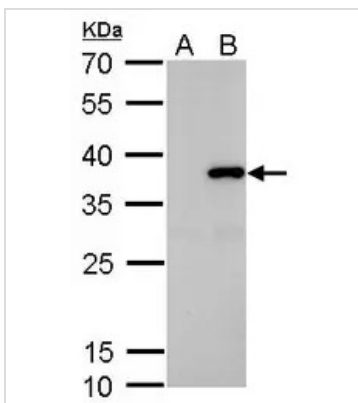
SLUG antibody detects SLUG protein by western blot analysis.

- A. 30 µg U87-MG whole cell lysate/extract
- B. 30 µg SK-N-SH whole cell lysate/extract
- C. 30 µg IMR32 whole cell lysate/extract
- D. 30 µg SK-N-AS whole cell lysate/extract

12% SDS-PAGE

SLUG antibody (GTx128796) dilution: 1:1000

The HRP-conjugated anti-rabbit IgG antibody (GTx213110-01) was used to detect the primary antibody.


GTx128796 WB Image

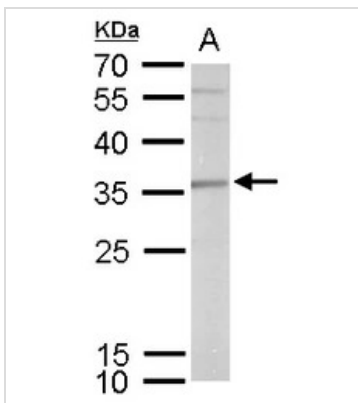
SLUG antibody detects SLUG protein by western blot analysis.

- A. 30 µg 293T whole cell extract
- B. 30 µg whole cell extract of human SLUG-transfected 293T cells

12% SDS-PAGE

SLUG antibody (GTx128796) dilution: 1:5000

The HRP-conjugated anti-rabbit IgG antibody (GTx213110-01) was used to detect the primary antibody.


GTx128796 WB Image

SLUG antibody detects SLUG protein by western blot analysis.

- A. 30 µg NT2D1 whole cell lysate/extract

12% SDS-PAGE

SLUG antibody (GTx128796) dilution: 1:1000

The HRP-conjugated anti-rabbit IgG antibody (GTx213110-01) was used to detect the primary antibody.



For full product information, images and publications, please visit our [website](https://www.genetex.com).