

Ubiquitin antibody

Cat. No. GTX128826

Host	Rabbit
Clonality	Polyclonal
Isotype	IgG
Application	WB
Reactivity	Human, Mouse, Rat

Reference (4)

Package

100 µl, 25 µl

APPLICATION

Application Note

*Optimal dilutions/concentrations should be determined by the researcher.

Suggested dilution	Recommended dilution
WB	1:500-1:10000

Not tested in other applications.

PROPERTIES

Form	Liquid
Buffer	PBS, 20% Glycerol
Preservative	0.025% ProClin 300
Storage	Store as concentrated solution. Centrifuge briefly prior to opening vial. For short-term storage (1-2 weeks), store at 4°C. For long-term storage, aliquot and store at -20°C or below. Avoid multiple freeze-thaw cycles.
Concentration	0.68 mg/ml (Please refer to the vial label for the specific concentration.)
Immunogen	The immunogen used to generate this antibody corresponds to Ubiquitin.
Purification	Purified by antigen-affinity chromatography.
Conjugation	Unconjugated

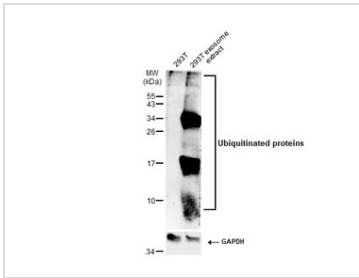
Note

For laboratory research use only. Not for any clinical, therapeutic, or diagnostic use in humans or animals. Not for animal or human consumption.

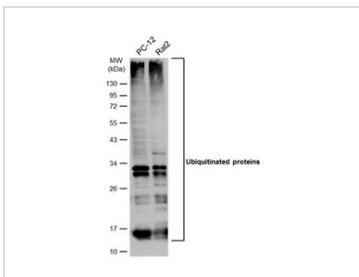
Purchasers shall not, and agree not to enable third parties to, analyze, copy, reverse engineer or otherwise attempt to determine the structure or sequence of the product.



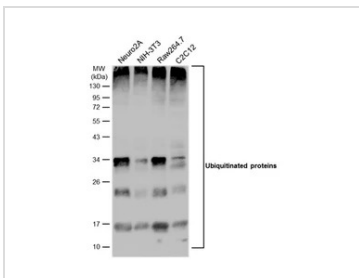
For full product information, images and publications, please visit our [website](#).

DATA IMAGES

GTX128826 WB Image

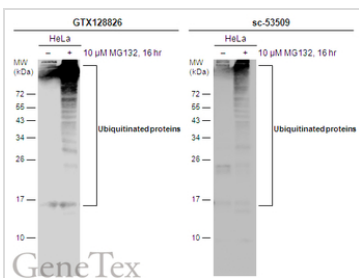
293T whole cell extracts and 293T exosome extract (2.6 µg) were separated by 15% SDS-PAGE, and the membrane was blotted with Ubiquitin antibody (GTX128826) diluted at 1:250. The HRP-conjugated anti-rabbit IgG antibody (GTX213110-01) was used to detect the primary antibody, and the signal was developed with Trident ECL plus-Enhanced.


GTX128826 WB Image

Various whole cell extracts (30 µg) were separated by 12% SDS-PAGE, and the membrane was blotted with Ubiquitin antibody (GTX128826) diluted at 1:1000. The HRP-conjugated anti-rabbit IgG antibody (GTX213110-01) was used to detect the primary antibody.

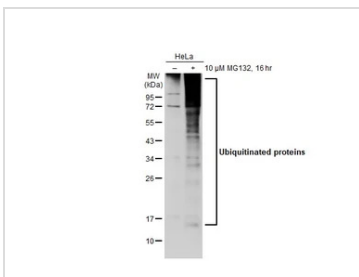

GTX128826 WB Image

Various whole cell extracts (30 µg) were separated by 12% SDS-PAGE, and the membrane was blotted with Ubiquitin antibody (GTX128826) diluted at 1:1000. The HRP-conjugated anti-rabbit IgG antibody (GTX213110-01) was used to detect the primary antibody.


GTX128826 WB Image

Untreated (–) and treated (+) HeLa whole cell extracts (30 µg) were separated by 12% SDS-PAGE, and the membranes were blotted with Ubiquitin antibody (GTX128826) diluted at 1:500 and competitor's antibody (sc-53509) diluted at 1:500. The HRP-conjugated anti-rabbit IgG antibody (GTX213110-01) was used to detect the primary antibody.

*Competitor's antibody is not affiliated with GeneTex and does not endorse this product.


GTX128826 WB Image

Untreated (–) and treated (+) HeLa whole cell extracts (30 µg) were separated by 12% SDS-PAGE, and the membrane was blotted with Ubiquitin antibody (GTX128826) diluted at 1:500. The HRP-conjugated anti-rabbit IgG antibody (GTX213110-01) was used to detect the primary antibody.



For full product information, images and publications, please visit our [website](https://www.genetex.com).